

PA-KO



2021



We want the world to be a peaceful place, but we know perfectly well that the key to achieving security is preparation for defense.

For this purpose, we provide our clients with solutions tailored to their needs. No order is too small or invalid. The key to our activity is flexibility - we do our best to meet budgetary requirements while maintaining the highest quality and functionality of our products.

We have over 25 years of experience in the defense industry, which has taught us that we believe that the users of our products are men and women on the front lines, and that their safety is in our hands.

Flexible

We will do our best to meet your budget expectations while maintaining best possible quality.

Quality

We are delivering high quality products for you. We understand that real end user are men and women on the frontlines.

Support

We are here for you. Clients satisfaction and safety and our reputation are crucial in every business.



TABLE OF CONTENTS

SMALL ARMS. 04

PAC15M.	06
PAC4.	09
AKM & AKMS.	10
PAC103.	12
TARA TM9.	16
TM-9 SMG.	17
RIFLE RED DOT.	18
RIFLE SCOPES.	20
LASER DEVICES.	21
RIFLE LIGHT.	22
SILENCERS.	23
PISTOL RED DOT.	24
PISTOL LIGHT.	25
ACCESSORIES.	26

ARMAMENT. 28

ANTOS.	30
M-46.	31
MACHINE GUNS.	32
CZ-30.	33
AMMUNITION.	35

APCS. 36

BMP1.	38
BRDM2.	39
OT64.	40
PANDUR.	41
PATRIOT.	42
PATRIOT II.	43
TRITON.	44
MEXCA.	45

ARTILLERY SYSTEMS. 46

BM-21 MT.	48
BM-21 MU.	49
DANA M2.	50
DITA 155 MM.	51
RM-70 M1.	52
RM-70 VAMPIRE 4D.	53
SHKH VZ.77 DANA.	54

TANKS. 56

T-55.	58
T-72 SCARAB.	59
T-72.	60

ENGINEERING. 62

AM-50 EX.	64
AM-70 EX.	65
AV-15.	66
DECON.	67
DECON ER.	68
UDS-214.	69
TREVA-15.	70
POSEIDON.	71
ENGINES.	72
BM-21 PARTS.	74



SMALL ARMS



PAC15M



PAC15 rifles operate on the basis of direct gas discharge to the BCG (Direct Impingement) where they expand in the internal piston causing the bolt carrier to move backwards and tightly unlock the bolt. Thanks to the linear gas transmission carbines using D.I. system have low recoil and rise so they are easy to control.

PAC15 carbines are distinguished by the unique diameter of the gas port holes in the barrel, exactly matched to the weight of the moving assembly. This translates into a reduction in recoil while maintaining high reliability of the PAC15 carbine.

The carbine has a light freefloat handguard made of 6061 aluminum. The upper part of the handguard is a Picatinny rail (MILSTD1913). In addition, the handguard has 7 planes with slots in the M-LOK system - an interface that is becoming increasingly popular. The mounting standard allows the installation of all kinds of additional accessories such as front grips, flashlights, etc.. PAC15 can be also equipped with other handguards including quadrail or hybrid M-LOK/Picatinny systems.

The carbine is equipped with a lightweight polymer stock, which can be locked in 6 positions to adjust its length to the shooter's preferences, worn clothing and equipment, and the task being performed. The stock has holes for mounting a sling using a QD mount. PAC15 is supplied with flip-up sights and a magazine.

At the end of 2019, we introduced the 2nd Generation of PAC15 rifles, which are distinguished by:

- ambidextrous charging handle;
- ambidextrous fire selector;
- ergonomic pistol grip;
- improved trigger assembly (trigger resistance approx. 1.3 kg).

Freefloat barrel in the carbine is made with button rifling. This method is precise and gives the barrel high stiffness and strength. The barrels maintain excellent parameters even after many thousands of shots. The service life of the barrel is foreseen for 10-12 thousand shots depending on the quality of the ammunition used and the frequency and methods of cleaning and maintenance.

PAC15 are manufactured according to the MilSpec standard, which means that they are compatible with spare parts manufactured in the AR15 standard. PAC15 is an excellent platform for personalization.

10.5"



14.5"



16"



18"



20"



ambidextrous charging handle



ambidextrous fire selector



Handguard with M-LOK system



Ergonomic pistol grip

	10.5"	14.5"	16"	18"	20"
Caliber	5.56 x 45 mm / .223 Rem.				
Barrel	free float, 1:7 barrel twist				
Gas system	carbine length	mid length	mid length	rifle length	rifle length
Weight	2,7 kg	2,9 kg	3,0 kg	3,1 kg	3,2 kg
Length	71 cm	86 cm	88 cm	92 cm	102 cm
Muzzle device	birdcage				
Stock	adjustable, 6 positions				
Grip	polymer				
Handguard	aluminium, M-LOK (PAC15 can be also equipped with quadrail or hybrid picatinny/M-LOK handguards)				
Includes	1 x flip-up sights 1 x magazine				
Optional accessories	<ul style="list-style-type: none"> • metal or polymer magazines • 1-2 point tactical sling • cleaning kit 				

5.56 x 45 mm



PAC4



PAC4 rifles operate on the basis of direct gas discharge to the BCG (Direct Impingement) where they expand in the internal piston causing the bolt carrier to move backwards and tightly unlock the bolt. Thanks to the linear gas transmission carbines using D.I. system have low recoil and rise so they are easy to control.

The carbine has a light classic handguard with picatinny rails made of aluminum. The universal mounting standard allows the installation of all kinds of additional accessories such as front grips, lasers, grenade launchers, flashlights, etc..

The carbine is equipped with a lightweight polymer stock, which can be locked in 6 positions to adjust its length to the shooter's preferences, worn clothing and equipment, and the task. PAC4 is supplied with flip-up sights and a magazine..

PAC4 FEATURES

- ambidextrous charging handle;
- ambidextrous fire selector;
- picatinny rail handguard;

14.5" barrel in the carbine offers very good ballistic performance while maintaining compact size of the carbine. Barrel is precise, stiff and very strong. The barrels maintain excellent parameters even after many thousands of shots.

PAC4 are manufactured according to the MilSpec standard, which means that they are compatible with spare parts manufactured in the AR15 /M4 standard. PAC4 is an excellent platform for personalization.



ambidextrous charging handle



ambidextrous fire selector

Barrel length	14.5"
Caliber	5.56 x 45 mm
Barrel	1:7 barrel twist
Gas system	carbine length
Trigger	single stage, select fire
ROF	700 - 950 rds / min
Weight	3,0 kg (depending on barrel profile)
Length	78 cm (stock retracted)
Muzzle device	birdcage
Stock	adjustable, 6 positions
Grip	A2 style
Handguard	rail interface system
Includes	

- 1 x flip-up sights
- 1 x magazine

Optional accessories

- metal or polymer magazines
- 1-2 point tactical sling
- cleaning kit

5.56 x 45 mm

AKM & AKMS



Poland has its own legacy in making AK system carbines which are well known for their reliability and endurance. AK Sporter and Hellpup made by PAKO are high quality AK carbines with a classic AK design. They work on the principle of a long piston stroke, so all of the residue resulting from the combustion of gunpowder stays on the piston, not on the bolt or bolt carrier group, which translates into reliable operation for which AK system is famous.

The latest generation of our AK carbines have a reinforced bolt carrier tail and a nitrided piston. Nitriding hardens the piston surface so that it is less exposed to damage caused by various chemical compounds generated during combustion of the propellant.

PAKO AK rifles are compatible with accessories from third party manufacturers, so changing the handguard, stock or grip is not a problem. The barrel in the carbine is made in button rifling process. This method is very precise and makes barrel very strong. The barrels maintain excellent parameters even after many thousands of shots.

PAKO carbines are manufactured to the military standards and norms.

AKM Wood



AKM - polymer



AKMS - wood



AKMS - polymer



Hellpup M - wood



Hellpup M - polymer



Hellpup Zhukov



	Sporter M polymer/wood	Sporter S polymer/wood	Hellpup M polymer/wood	Hellpup Zhukov
Caliber	7,62 x 39 mm			
Operation	long piston stroke			
Weight	3,5 kg / 3,6 kg	3,4 kg / 3,5 kg	3,3 kg / 3,5 kg	3,4 kg
Length	880 mm	880 mm	555 mm	780 mm
Muzzle device	standard AK compensator		flash hider	
Stock	polymer/wood	steel, folding	polymer/wood	Magpul Zhukov
Grip		polymer/bakelite		Magpul MOE
Handguard		polymer/wood		Magpul Zhukov
Includes	sling, magazine pouch, cleaning rod			

7.62 x 39 mm

PAC103

High quality AK carbines with a classic AK design. It work on the principle of a long piston stroke, so all of the residue resulting from the combustion of gunpowder stays on the piston, not on the bolt or bolt carrier group, which translates into reliable operation for which AK system is famous.

PA-KO AK carbines have a reinforced bolt carrier tail and a nitrided piston. Nitriding hardens the piston surface so that it is less exposed to damage caused by various chemical compounds generated during combustion of the propellant.

Aluminium handguard with Rail Interface System allows for installation of various accessories such as front grips, tactical light, laser devices and other force multipliers.

Rear sight is equipped with rail for mounting red dot sights. Rail can be used as back up iron sights.

The barrel in the carbine is made in button rifling process. This method is very precise and makes barrel very strong. The barrels maintain excellent parameters even after many thousands of shots.

	PAC103-762	PAC103S-762	PAC103-556	PAC103S-556
Caliber	7,62 x 39 mm		5.56 x 45 mm (NATO)	
Operation	semi-, full automatic, long piston stroke			
Rate of fire	app 600 rpm		app 700 rpm	
Sight radius	370 mm		385 mm	
Max sight range	1000 m		1000 m	
Battlesight zero	350 m			
Effective range	350 m		450 m	
Maximum range	~1400 m		~1400 m	
Barrel length	415 mm		457 mm	
Muzzle velocity	~715 m/s		~930 m/s	
Barrel life span	app 20,000 rds		app 30,000 rds	
Magazine capacity	30rds		30 rds	
Weight	3,8 kg*	3,7 kg*	3,4 kg	3,3 kg
Length	840-920 mm*	695/885 mm*	930 - 990 mm	
Muzzle device	AK break-comp		A2 style muzze device	
Stock	polymer, 6 position	steel, folding	polymer, 6 position	steel, folding
Grip	polymer		polymer	
Handguard	aluminium, Rail Interace System		aluminium, Rail Interace System	
Includes	4 x magazine, sling, magazine pouch, cleaning rod			

* Final weight and dimensions depends on chosen accessories (stock, muzzle device, etc.).



PAC103-762



PAC103S-762



PAC103S-762
with folded stock

PAC103 / PAC103S can be equipped with various accessories to enhance operator capabilities on the modern battlefield.

RED DOT SIGHT / TACTICAL LIGHT / LASER DEVICE / FRONT GRIP / SILENCER



Presented with LS321 Laser Device



NOTE: Accessories can be bought separately and are not part of PAC103 / PAC103S set.

PAC103 7.62/5.56

POSSIBLE PAC103 / PAC103S VARIANTS



PAC103 WITH ALUMINIUM HANDGUARD WITH PICATINNY RAILS
RED DOT MOUNTED ON RAIL IN PLACE OF REAR SIGHT



PAC103 WITH STANDARD POLYMER HANDGUARD
WITH GP34 GRENADE LAUNCHER
(POSSIBLE EXTENSION OF HANDGUARD WITH SIDE PICATINNY RAILS)



PAC103 WITH STANDARD REAR SIGHT
WITH RED DOT MOUNTED ON FRONT RAIL



RIFLE RED DOT

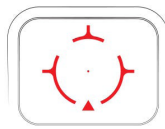


VORTEX RAZOR AMG UH-1

The Razor AMG UH-1 is fast, intuitive and technologically advanced for close-quarters and lightning-fast engagement. A revolutionary type of holographic system gives you the impressive sight picture and distortion-free image of a holographic sight, with the energy efficiency and durability of a traditional red dot. With an ultra-clean sight picture and the incredibly fast EBR-CQB reticle, the UH-1 is sure to uncover a level of speed and accuracy in close-quarters you never knew existed.

- Fully Multi-Coated Increase light transmission with multiple anti-reflective coatings on all air-to-glass surfaces.
- Brightness Settings - 15 Levels
- Unlimited Eye Relief - non-critical eye relief for rapid target acquisition
- Parallax Free All red dot and holographic sights will exhibit some small amount of parallax. Matching current industry practice, this small amount would be considered "parallax free" and will make a negligible difference in performance.

LEAD TIME	3-12 MONTHS
MOUNT TYPE	PICATINNY
MAGNIFICATION	1X
DOT COLOR	BRIGHT RED
DOT SIZE	1 MOA
EYE RELIEF	UNLIMITED
ADJUSTMENT GRADUATION	1/2 MOA
TRAVEL PER ROTATION	16.5 MOA
MAX ELEVATION ADJUSTMENT	100 MOA
MAX WINDAGE ADJUSTMENT	100 MOA
PARALLAX SETTING	PARALLAX FREE
BATTERY TYPE	CR123
BATTERY LIFE	~600 HRS
LENGTH	3.6 INCHES
WEIGHT	334 G



EBR-CQB RETICLE
The clean, highly versatile, purpose-built reticle creates optimal target engagement in a wide range of scenarios.

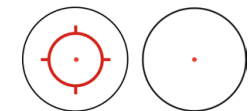


HS512R

The HE512T-RD is an enclosed reflex optical sight designed for rifle and carbine applications. Optional Titanium housing, Holosun's Super LED with up to 50k hours battery life, Multi-Reticle System, Solar Failsafe, and Shake Awake.

- MRS: Circle Dot; 2 MOA Dot; 65 MOA Circle
- Up to 50,000 Hours Battery Life (Setting 6)
- 12 Brightness Setting: 10 DL & 2 NV Compatible
- Convenient Tray Battery Compartment
- Completely Enclosed Design & Titanium Housing
- Parallax-free & Unlimited Eye Relief
- Available with titanium housing
- Available with green reticle

LEAD TIME	30-90 DAYS
MOUNT TYPE	PICATINNY
MAGNIFICATION	1X
DOT COLOR	BRIGHT RED
RETICLE TYPE	2 MOA DOT, 2 MOA DOT + 65 MOA CIRCLE
EYE RELIEF	UNLIMITED
ADJUSTMENT GRADUATION	1/2 MOA
MAX ELEVATION ADJUSTMENT	50 MOA
MAX WINDAGE ADJUSTMENT	50 MOA
PARALLAX SETTING	PARALLAX FREE
BATTERY TYPE	CR2032 + SOLAR PANEL
BATTERY LIFE	~50,000 HRS
DIMENSION	3.35X1.63X1.7"
WEIGHT	260 G



MRS: Circle Dot; 2 MOA Dot; 65 MOA Circle

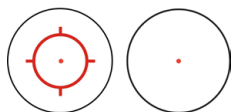


HS503CU

The HS503CU is a 20mm micro optical sight designed for rifle and carbine applications. Features include Solar Failsafe, Shake Awake, 12 brightness settings, Holosun's Super LED with up to 50k hours battery life, and Multi-Reticle System.

- MRS:2 MOA Dot; 2 MOA Dot & 65 MOA Circle
- Up to 50,000 Hours Battery Life (Setting 6)
- 12 Brightness Setting: 10 DL & 2 NV Compatible
- Convenient Tray Battery Compartment
- Parallax-free & Unlimited Eye Relief

MOUNT TYPE	PICATINNY
MAGNIFICATION	1X
DOT COLOR	BRIGHT RED
RETICLE TYPE	2 MOA DOT, 2 MOA DOT + 65 MOA CIRCLE
EYE RELIEF	UNLIMITED
ADJUSTMENT GRADUATION	1/2 MOA
MAX ELEVATION ADJUSTMENT	50 MOA
MAX WINDAGE ADJUSTMENT	50 MOA
PARALLAX SETTING	PARALLAX FREE
BATTERY TYPE	CR2032 + SOLAR PANEL
BATTERY LIFE	~50,000 HRS
DIMENSION	6,6 X 3,6 X 4 CM
WEIGHT	85 G

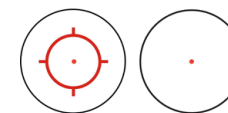


HE515CT

The HE515CT-RD is a 20mm micro optical sight designed for rifle and carbine applications. Features include a Titanium Housing, Solar Failsafe, Shake Awake, 12 brightness settings, Holosun's Super LED with up to 50k hours battery life, Multi-Reticle System, QD mount, Kill flash, and Clear Lens Caps.

- MRS:2 MOA Dot; 2 MOA Dot & 65 MOA Circle
- Up to 50,000 Hours Battery Life (Setting 6)
- 12 Brightness Setting: 10 DL & 2 NV Compatible
- Tray Battery Compartment & Titanium Housing
- Parallax-free & Unlimited Eye Relief
- Quick Release & Detachable Mount
- Available with green reticle

MOUNT TYPE	PICATINNY, QD
MAGNIFICATION	1X
HOUSING	TITANIUM
DOT COLOR	BRIGHT RED (AVAILABLE WITH GREEN RETICLE)
RETICLE TYPE	2 MOA DOT, 2 MOA DOT + 65 MOA CIRCLE
EYE RELIEF	UNLIMITED
ADJUSTMENT GRADUATION	1/2 MOA
MAX ELEVATION ADJUSTMENT	50 MOA
MAX WINDAGE ADJUSTMENT	50 MOA
PARALLAX SETTING	PARALLAX FREE
BATTERY TYPE	CR2032 + SOLAR PANEL
BATTERY LIFE	~50,000 HRS
DIMENSION	6,78 X 3,68 X 4 CM
WEIGHT	115 G



RIFLE SCOPES

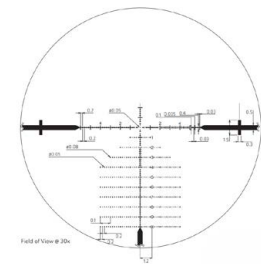


DELTA OPTICAL JAVELIN 4.5-30x56 FFP

ED optics, large adjustment turrets, both lockable, 34mm tube, 0.1MRAD click, illuminated point, zero-stop, throw lever, metal flip-open covers, sunshade. Unique Scandinavian Match Reticles reticles designed by shooters: clean, simple, no distractions. Efficient and versatile.

MAGNIFICATION RANGE	4.5 - 30 X
OBJECTIVE DIAMETER	56 MM
FOV@100 M 4.5X	8.2 M
FOV@100 M 30X	1.3 M
EYE RELIEF	100 MM
DIOPTER RANGE	-2D/+2D
RETICLE POSITION	FIRST FOCAL PLANE
ILLUMINATION	DOT
PER CLICK	0.1 MRAD
ELEV ADJ RANGE	32 MRAD
WIND AJD RANGE	32 MRAD
PARALLAX ADJ	25 M - INFINITY
ZERO-STOP	YES
TUBE DIAMETER	34 MM
LENGTH	388.6 MM
WEIGHT	1036 G

SMR-1 Reticle

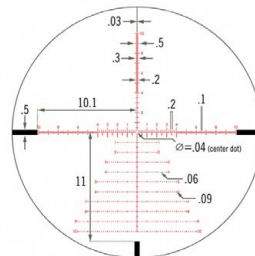


VORTEX RAZOR II HD 3-18X50 FFP EBR-7

The clear choice for precision, tactical and competition shooters looking for the optimal combination of features and optical quality. The Razor HD Gen II provides long-range shooters the advanced features needed to perform at the highest level, including locking turrets, the integrated L-Tec zero stop and a first focal plane reticle for when shots need to be taken quickly from any magnification.

MAGNIFICATION RANGE	3 - 18 X
OBJECTIVE DIAMETER	50 MM
FOV@100 YDS	37.8-6.25 FT
EYE RELIEF	94 MM
RETICLE POSITION	FIRST FOCAL PLANE
PER CLICK	0.1 MRAD
ELEV ADJ RANGE	28.5 MRAD
WIND AJD RANGE	10 MRAD
PARALLAX ADJ	25 M - INFINITY
TUBE DIAMETER	34 MM
LENGTH	36.5 CM
WEIGHT	1318 G

EBR-7C Reticle (MRAD)



MAGNIFIERS



HOLOSUN HM3X

The HM3X is An Aluminum bodied 3X magnifier that includes a quick release, ambidextrous, flip-to-side mount with Absolute and Lower 1/3 Co-witness mounting solutions. Additional features include 2.75" of eye relief, IP67 certified water resistance, with windage and elevation adjustment for precision zeroing.

MAGNIFICATION RANGE	3X
FOV@100 YDS	7" / 37 FT
EYE RELIEF	2,75"
PER CLICK	0.5 MOA
LENGTH	99 X 41 X 60 MM
WEIGHT	277 G



HOLOSUN HM3XT

The HM3XT is a Titanium bodied 3X magnifier that includes a quick release, flip-to-side mount with Absolute and Lower 1/3 Co-witness mounting solutions. Additional features include 2.75" of eye relief, IP67 certified water resistance, with windage and elevation adjustment for precision zeroing.

MAGNIFICATION RANGE	3X
FOV@100 YDS	7" / 37 FT
EYE RELIEF	2,75"
PER CLICK	0.5 MOA
LENGTH	42 X 80 X 61 MM
WEIGHT	328 G

LASER DEVICES



HOLOSUN LE221

IR | VIS

The LE221-GR is a Titanium bodied multi-laser aiming device. Includes class IIIA visible green laser and class 2M IR laser coaxially mounted for easy zeroing. Also features a quick release picatinny rail mount, remote pressure switch, and IPX8 water resistance

- Coaxial Green and IR Laser Pointer
- High/Low Brightness Setting
- Complete Titanium Housing
- Remote Cable Switch
- Quick Release Mount
- IP67 Waterproof
- Available with red or green laser pointer

LE221	
MOUNT TYPE	PICATINNY
IR ILLUMINATOR OUTPUT	0.7MW
IR POINTER OUTPUT	0.1MW(LOW)/0.7MW(HIGH)
VISIBLE LASER OUTPUT	1 MW (LOW) / 5 MW (HIGH)
HOUSING	TITANIUM
ADJUSTMENT GRADUATION	1/2 MOA
MAX ELEVATION ADJUSTMENT	60 MOA
MAX WINDAGE ADJUSTMENT	60 MOA
BATTERY TYPE	CR123A
BATTERY LIFE	UP TO MODES
DIMENSION	3.43×1.77×1.34"
WEIGHT	195 G



HOLOSUN LS321/LH321

IR | VIS | IR ILLUMINATOR

The LS321G is a 7075 Aluminum bodied multi-laser aiming device. Includes class IIIA visible red laser, class 2M IR laser, and IR Illuminator coaxially mounted for easy zeroing. Also features an IR Illuminator focus adjustment, quick release picatinny rail mount, remote pressure switch, and IP67 water resistance.

- Coaxial Dual Laser & IR Illuminator
- High/Low Brightness Setting
- Remote Cable Switch
- Quick Release Mount
- IP67 Waterproof
- Available with red or green laser pointer

LS321		LH321
MOUNT TYPE	PICATINNY	
IR ILLUMINATOR OUTPUT	0.7MW	45 MW
IR POINTER OUTPUT	0.1MW(LOW) 0.7MW(HIGH)	0.7 MW (LOW) 45 MW (HIGH)
VISIBLE LASER OUTPUT	1 MW (LOW) / 5 MW (HIGH)	5 MW (LOW) / 25 MW (HIGH)
HOUSING	7075 T6 ALUMINUM	
ADJUSTMENT GRADUATION	1/2 MOA	
MAX ELEVATION ADJUSTMENT	50 MOA	
MAX WINDAGE ADJUSTMENT	50 MOA	
BATTERY TYPE	CR123A	
BATTERY LIFE	UP TO MODES	
DIMENSION	3.6×2.2×1.6 "	
WEIGHT	245 G	



HOLOSUN LE420

IR | VIS | IR ILLUMINATOR | WHITE LIGHT

The LE420 is a Titanium bodied multi-laser aiming device. Includes class IIIA visible green laser, class 2M IR laser, and IR Illuminator coaxially mounted for easy zeroing. Also features a 600 Lumen white light, IR Illuminator focus adjustment, quick release picatinny rail mount, remote pressure switch, IPX8 water resistance, and is powered by two CR123 batteries for increased run-time.

- Dual Lasers & Dual Illuminators
- Complete Titanium Housing
- High/Low Brightness Setting
- Remote Cable Switch
- Quick Release Mount
- IP67 Waterproof
- Available with red or green laser pointer

LS321	
MOUNT TYPE	PICATINNY
IR ILLUMINATOR OUTPUT	0.7MW
WHITE LIGHT OUTPUT	600 LM
IR POINTER OUTPUT	0.1MW(LOW)/0.7MW(HIGH)
VISIBLE LASER OUTPUT	1 MW (LOW) / 5 MW (HIGH)
HOUSING	TITANIUM
ADJUSTMENT GRADUATION	1/2 MOA
MAX ELEVATION ADJUSTMENT	60 MOA
MAX WINDAGE ADJUSTMENT	60 MOA
BATTERY TYPE	CR123A
BATTERY LIFE	UP TO MODES
DIMENSION	3.66×3.07×1.46"
WEIGHT	310 G

RIFLE LIGHT



STREAMLIGHT PROTAC RAIL MOUNT HL-X LONG GUN LIGHT

Lightweight, compact, low profile, high lumen, lithium battery powered Gun-Mounted Tactical Light featuring the latest in shock-proof power LED technology. It incorporates the versatility to use two battery types; two CR123A batteries, or one Streamlight Rechargeable Li Ion cell. The light provides 1 hour 20 minutes of continuous run time on high and over 20 hours on low intensity. Rail clamp designed to rapidly and securely attach/detach from rifles, carbines and submachine guns with a MIL Standard 1913 Rail.

- C4@LED technology for extreme brightness.
- Momentary/steady On-Off switch.
- One handed on/off & tighten interface keeps hands away from muzzle when attaching/detaching.
- Securely fits a broad range of weapons.
- Mounts directly to guns with MIL-STD-1913 (Picatinny) rails.
- Extensively live-fire tested, impact resistant construction.
- Operating temperature: -40°F to +120°F.
- IPX7 rated with the Standard button switch installed; waterproof to 1 meter for 30 minutes.
- IPX4 rated with the Remote Pressure Switch installed for water resistant operation.

MOUNT TYPE	PICATINNY (SCOUT STANDARD MOUNTS)
LIGHT OUTPUT	1000 LUMENS
RUN TIME ON HIGH	1,25 HRS
BEAM DISTANCE	332 METERS
MAX CANDELA	27,600
BATTERY TYPE	2 X CR123A LITHIUM / 18650
DIMENSION LENGTH	5.43 INCHES (13.79 CENTIMETERS)
WEIGHT	6.40 OUNCES (181.44 GRAMS) - 6.90 OUNCES (195.61 GRAMS)



STREAMLIGHT PROTAC RAIL MOUNT 1 LONG GUN LIGHT

The Streamlight ProTac Rail Mount 1 is a compact and powerful tactical light dedicated for long guns. Mounting to M1913 Picatinny rails with the integrated mount, the ProTac RM1 can be used with either a standard push button tail cap or an included remote switch giving the shooter out of the box flexibility. As an added bonus, it is a dual-fuel light, capable of running on Lithium or easy-to-find alkaline batteries (though at reduced output.).

- Bright 12,000 candela beam reaches out to almost 240 yards
- Includes a multi-function tail cap and remote pressure switch
- Strobe feature (that can be disabled)
- Dual fuel system can be powered by (1) CR123A Lithium battery or (1) AA battery (lithium or alkaline) at reduced output
- IPX7 water proof to 1 meter for thirty minutes and impact tested to 2 meters with standard button switch
- IPX4 water resistant with remote pressure switch
- Durable aluminum body with anodized finish
- Compact size at just 4.25" and 4.30 - 4.50 oz

MOUNT TYPE	PICATINNY (SCOUT STANDARD MOUNTS)
LIGHT OUTPUT	350 LUMENS / 40 LUMENS @ AA BATTERY
RUN TIME ON HIGH	1,75 HRS
BEAM DISTANCE	230 METERS
MAX CANDELA	12,000
BATTERY TYPE	1 X CR123A / 1 X AA
DIMENSION LENGTH	4,25" INCHES (10,8 CENTIMETERS)
WEIGHT	4,50 OUNCES (127 GRAMS)

NOTE: TO WORK WITH PAC15 M-LOK HANGUARD FLASHLIGHT NEEDS ADDITIONAL MOUNT. NOT INCLUDED WITH STANDARD PAC15 CARBINE

SILENCERS



AKM SILENCER

This silencer for the AK-47 (AKM) is based on the work of Sir Hiram Stevens, an American inventor. Despite the size of a sound-moderator, it has a pretty low weight, which was appreciated by military members. This is an AKM silencer made of AISI 304 stainless steel. This material will not corrode and can withstand fast temperature changes. This is the third generation of silencers in our company and we have used feedback to improve it and remove weak points.

We recommend cleaning and drying the silencer using kerosene after each 5000 shots. This sound moderator makes sound quieter by 26 to 29 dB, which is approximately 55 to 65% quieter than a shot using regular ammo (not subsonic ammo). The sound of the shot looks like the shot of a small-bore rifle or handgun.

Attention! Not compatible with the GP-25 grenade launcher.

- Weight - 590 g
- Material - Stainless steel AISI 304
- Caliber - 7.62 x 39
- Screw-thread - 14x1L
- Color - Black
- Serviceability - from 5000 shots
- Other - 145 mm x 50 mm



B&T ROTEX X COMPACT SUPPRESSOR

Compatible with standard NATO A2 muzzle device is the optimal solution when a suppressor, mount- and detachable within seconds with a high suppression rate is needed. Besides that it very effectively suppresses the muzzle flash.

Caliber	5.56 x 45 mm / .223 Rem.
Total length	169 mm
Extending length	122 mm
Diameter	39 mm
Weight	~500 g
Material	Inconel & Thermax
Color	Grey/black
Sound suppression	~ 28 dB (A)
Full Auto capability	until glowing red
Suppressor connector	QD with A2 muzzle device

PISTOL RED DOT



HOLOSUN HS407C

The HS407C is an open reflex optical sight designed for pistol applications. Features include Holosun's Super LED with up to 50k hours battery life, 2MOA dot only, Solar Failsafe, and Shake Awake.

- 2 MOA Dot Reticle
- Up to 50,000 Hours Battery Life (Setting 6)
- 12 Brightness Setting: 10 DL & 2 NV Compatible
- Convenient Tray Battery Compartment
- Parallax-free & Unlimited Eye Relief

MOUNT TYPE	PICATINNY, RMR FOOTPRINT
MAGNIFICATION	1X
HOUSING	7075 T6 ALUMINUM
DOT COLOR	BRIGHT RED
RETICLE TYPE	2 MOA DOT
EYE RELIEF	UNLIMITED
ADJUSTMENT GRADUATION	1 MOA
MAX ELEVATION ADJUSTMENT	50 MOA
MAX WINDAGE ADJUSTMENT	50 MOA
PARALLAX SETTING	PARALLAX FREE
BATTERY TYPE	CR2032 + SOLAR PANEL
BATTERY LIFE	~50,000 HRS
DIMENSION	45 X 29 X 29 MM
WEIGHT	42 G



HOLOSUN HE508T RD

The HE508T-RD X2 is a titanium, open reflex optical sight designed for pistol applications. The X2 Series pistol optics feature two improvements. First is the addition of Lock Mode from our 2018-2019 LE pistol optic models. Lock Mode, when activated, locks the buttons preventing inadvertent setting changes. Second, the buttons have been redesigned to compliment the Lock Mode by placing them lower and out of the way. Additional features include a Titanium housing, Holosun's Super LED with up to 50k hours battery life, Solar Failsafe, Multi-Reticle System, and Shake Awake.

- MRS: Circle Dot; 2 MOA Dot; 32 MOA Circle
- Up to 50,000 Hours Battery Life (Setting 6)
- 12 Brightness Setting: 10 DL & 2 NV Compatible
- Complete Titanium Housing
- Convenient Tray Battery Compartment
- Parallax-free & Unlimited Eye Relief

MOUNT TYPE	RMR FOOTPRINT
MAGNIFICATION	1X
HOUSING	TITANIUM
DOT COLOR	BRIGHT RED
RETICLE TYPE	2 MOA DOT; 32 MOA CIRCLE
EYE RELIEF	UNLIMITED
ADJUSTMENT GRADUATION	1 MOA
MAX ELEVATION ADJUSTMENT	50 MOA
MAX WINDAGE ADJUSTMENT	50 MOA
PARALLAX SETTING	PARALLAX FREE
BATTERY TYPE	CR2032 + SOLAR PANEL
BATTERY LIFE	~50,000 HRS
DIMENSION	45 X 29 X 29 MM
WEIGHT	56 G



HOLOSUN HE509T

The HE509T-RD is an enclosed reflex optical sight designed for pistol applications. Features include a Titanium housing, Holosun's Super LED with up to 50k hours battery life, Multi-Reticle System, Solar Failsafe, and Shake Awake.RMR

The included 509T-RD RMR adapter plate is not compatible with ZEV or Shadow Systems style RMR interfaces.

- MRS: Circle Dot; Dot Only
- Up to 50,000 Hours Battery Life (Setting 6)
- 12 Brightness Setting: 10 DL & 2 NV Compatible
- Enclosed Design & Titanium Housing
- Convenient Tray Battery Compartment
- Parallax-free & Unlimited Eye Relief

MOUNT TYPE	RMR ADAPTER (INCLUDED)
MAGNIFICATION	1X
HOUSING	TITANIUM
DOT COLOR	BRIGHT RED
RETICLE TYPE	2 MOA DOT & 32 MOA CIRCLE
EYE RELIEF	UNLIMITED
ADJUSTMENT GRADUATION	1 MOA
MAX ELEVATION ADJUSTMENT	30 MOA
MAX WINDAGE ADJUSTMENT	30 MOA
PARALLAX SETTING	PARALLAX FREE
BATTERY TYPE	CR1632 + SOLAR PANEL
BATTERY LIFE	~50,000 HRS
DIMENSION	40,7 X 32 X 29 MM
WEIGHT	49 G

PISTOL LIGHT



STREAMLIGHT TLR-1

- 300 lumens; 2.5 hours regulated run time
- Rail grip clamp system securely attaches/detaches quickly and safely with no tools
- Powered by two 3-volt CR123 lithium batteries
- High Lumens: 300
- Run Time: 2.50 hours
- Max Candela: 12,000
- Battery Type: CR123A Lithium
- Battery Quantity: 2
- Length: 3.39 inches (8.61 centimeters)
- Weight: 4.18 ounces (118.50 grams)



STREAMLIGHT TLR-1 HL

- 1,000 lumens; runs 1.5 hours
- Wide beam pattern lights up large areas; ideal for clearing a room or searching an alley
- Powered by two CR123A lithium batteries
- Rail grip clamp system securely attaches/detaches quickly and safely with no tools and without putting your hands in front of the muzzle
- High Lumens: 1,000
- Run Time: 1.50 hours
- Beam Distance: 283 meters
- Battery Type: CR123A Lithium
- Battery Quantity: 2
- Length: 3.39 inches (8.61 centimeters)
- Weight: 4.32 ounces (122.47 grams)



STREAMLIGHT TLR-2

- 300 lumens and 2.5 hours runtime
- Powered by two 3-volt CR123 lithium batteries
- Rail grip clamp system securely attaches quickly and safely with no tools
- LASER ONLY runs 48 hours.
- High Lumens: 300
- Run Time: 2.50 hours
- Max Candela: 12,000
- Battery Type: CR123A Lithium
- Battery Quantity: 2
- Length: 3.39 inches (8.61 centimeters)
- Weight: 4.72 ounces (133.81 grams)



STREAMLIGHT TLR-2 HL

- 1,000 lumens; 283m beam; runs 1.5 hours (LED/Laser combo)
- Red laser provides long-range targeting
- Wide beam pattern lights up large areas
- Rail clamp system securely attaches/detaches quickly and safely with no tools and without putting your hands in front of the muzzle
- High Lumens: 1,000
- Run Time: 1.50 hours
- Beam Distance: 283 meters
- Battery Type: CR123A Lithium
- Battery Quantity: 2
- Length: 3.39 inches (8.61 centimeters)
- Weight: 4.88 ounces (138.35 grams)

ACCESSORIES

AR15



MEVA - ambidextrous charging handle

Fits	AR15 (D.I.)
Material	aluminium
Weight	36 g



AR15 charging handle

Fits	AR15 (D.I.)
Material	aluminium



Ergonomic pistol grip for AR15

Fits	AR15
Material	polimer
Weight	221 g



AR15 A2 Grip

Fits	AR15
Material	polymer
Weight	200 g



Ambidexterous fire selector

Fits	AR15 (semi automatic)
Material	Aluminium
Weight	ok 100 g



AR15 stock

Tube	Mil-Spec
Material	polymer
Weight	265 g



AR15 stock

Tube	Mil-Spec
Material	polymer
Weight	280 g



AR15 M-LOK handguard

System	M-LOK & Picatinny (MilSpec 1913)
Lengths	10", 13.5", 15"
Weight	~ 300 g
Notes	includes barrel nut

AK



AK M-LOK handguard

System	M-LOK
Fits	AK rifles
Weight	app. 100 g
Material	aluminium 6061



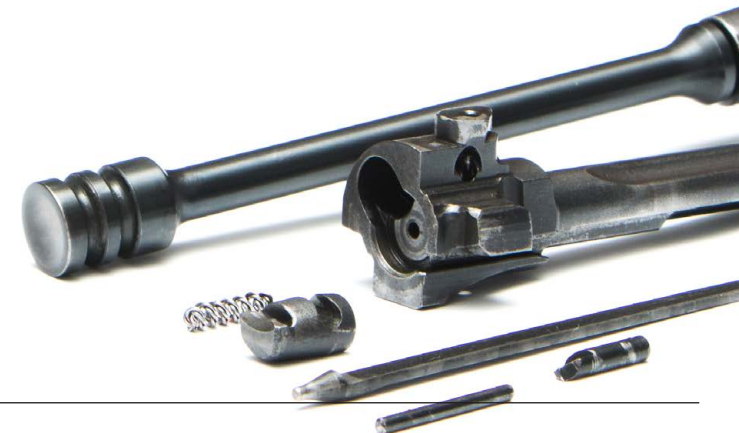
AK magazines

	Polymer	Steel
Caliber	7.62 x 39 mm	
Capacity	30 rd	
Weight	180 g	360 g



AK 6H4 bayonet

Fits	AK/AKMS
Material	stainless steel
Weight	550 g
Condition	surplus





DTF SOLUTIONS MODULAR CARBINE SLING

MCS stands for Modular Carbine Sling - which means it can be adjusted to operators needs and situation. It can be easily converted from 2 point to 1 point sling. Padding allows to carry a rifle for long period of time. Padding position can be adjusted depending on shooters build and configuration, or removed for concealed operations.

- easily converted from 2-point to 1-point sling
- made of high quality materials
- comfort padding for long time operations
- padding position can be adjusted

NOTE: DEPENDING ON RIFLE SETUP SLING MIGHT NEED ADDITIONAL MOUNTING SOLUTIONS



SVRN AR15 CLEANING KIT

A 10 piece rifle cleaning kit, for the .22LR, .223, .257, etc. Anything that is .20-.25 caliber can be cleaned with this kit. You can also clean the metric equivalents such as 5.56mm, etc. Kit is kept in nylon pouch.

- Size of canvas pouch: app. 24.5cm x 9.5cm

Package Include:

- brass brush
- chamber brush
- plastic oil bottle
- patch holder
- rifle rods
- nylon cleaning brush



AR15 STEEL MAGAZINES

Durable steel magazines for AR15/M16 platform. Equipped with anti-tilt follower which ensure reliable operation and feeding of a carbine.

CALIBER	5.56 X 45 MM / .223 REM.
CAPACITY	30 RDS
WEIGHT	221 G
MATERIAL	STEEL



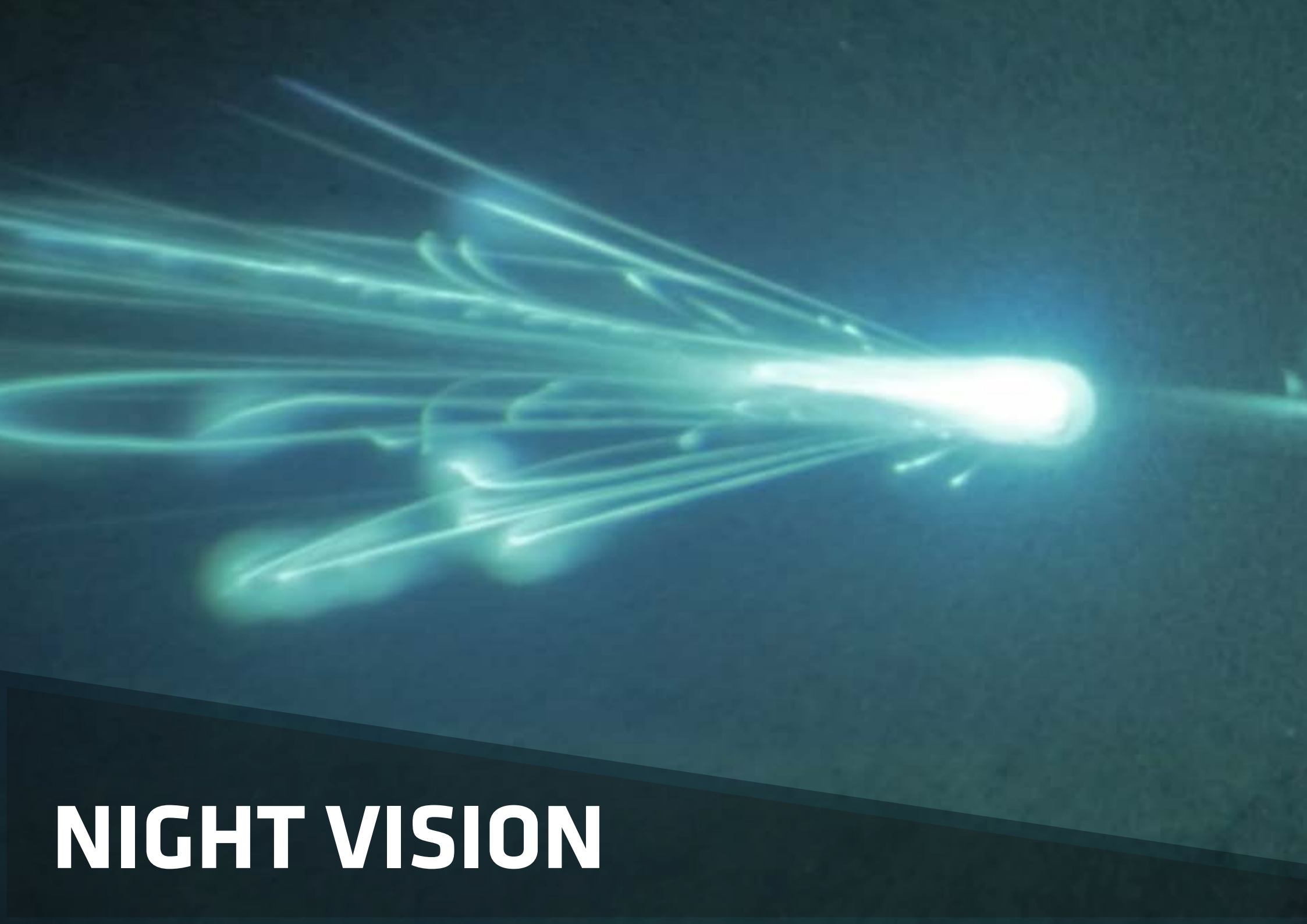
AR15 POLYMER MAGAZINES

Made of durable and lightweight polymer. Equipped with anti-tilt follower which ensure reliable operation and feeding of a carbine.

NOTE: Depending on end user preferences we can deliver various models of polymer magazines.

CALIBER	5.56 X 45 MM / .223 REM.
CAPACITY	30 RDS
WEIGHT	~120 - 140 G (DEPENDENT ON THE MAGAZINE MODEL)
MATERIAL	POLYMER

Reference photo



NIGHT VISION



NIGHT VISION



PVS-14

PVS-14 is a rugged, lightweight, multi-purpose night vision device that has been combat proven. It was originally commissioned by the United States Military to enable nighttime operations and is currently used by many NATO armies. This monocular is used globally in most challenging environments. It can be equipped with Photonis 4G advanced image intensifier which ensures tactical and functional advantage over standard generation 3 devices. Wide spectrum photocathode combined with advanced ultrafast autogating, automatic and manual brightness control with bright source protection make it possible to use this device not only during night but it is the first night vision device that can be also used at dawn and dusk.

- Compact design
- Waterproof
- Light and rugged
- Head or helmet-mountable for hands-free usage
- Manual and automatic gain control
- Built-In Infrared illuminator
- Powered by 1x AA battery
- Ease and convenient to use

	PVS-14 40	PVS-14 51
IMAGE INTENSIFIER	4G / GEN3 / GEN2 WHITE OR GREEN PHOSPHOR	
MAGNIFICATION	X1 (OPTIONAL X3 OR X5)	
LENS	26 MM, F/1.2	19 mm, F/1.26
FOV	40°	51°
FOCUS RANGE	0,25 M TO INFINITY	
DIOPTER ADJUSTMENT	-6 TO +4	
EYE RELIEF	25 MM	
INDICATORS IN THE FOV	LOW BATTERY, IR OM	
MANUAL GAIN CONTROL	YES (OPTION)	
BRIGHT LIGHT CUT-OFF	YES	
AUTOMATIC SHUT-OFF WHEN RAISED	YES (REQUIRE COMPATIBLE MOUNT)	
INFRARED ILLUMINATOR	YES	
BATTERY	1 X AA	
BATTERY LIFE	UP TO 50 H	
WEIGHT	320 G	
DIMENSIONS	114 X 63 X 69 MM	





NVG-40 & NVG-51

NVG-51 is dual-channel night vision device with improved situation awareness feature. The NVG-51 uses new generation 51° FOV advanced multi-coated optics and it is built to last with a compact composite housing. It can be equipped with Photonis 4G advanced image intensifier which ensures tactical and functional advantage over standard generation 3 devices. Wide spectrum photocathode combined with advanced ultrafast autogating, automatic and manual brightness control with bright source protection make it possible to use this device not only during night but it is the first night vision device that can be also used at dawn and dusk

- Compact design
- Waterproof
- Light and rugged
- Head or helmet-mountable for hands-free usage
- Manual and automatic gain control
- Build-In Infrared illuminator
- Powered by 1x AA battery
- Ease and convenient to use

	PVS-14 40	PVS-14 51
IMAGE INTENSIFIER	4G / GEN3 / GEN2 WHITE OR GREEN PHOSPHOR	
MAGNIFICATION	X1 (OPTIONAL X3 OR X5)	
LENS	26 MM, F/1.2	19 mm, F/1.26
FOV	40°	51°
FOCUS RANGE	0,25 M TO INFINITY	
DIOPTER ADJUSTMENT	-6 TO +4	
EYE RELIEF	25 MM	
INDICATORS IN THE FOV	LOW BATTERY, IR OM	
MANUAL GAIN CONTROL	YES (OPTION)	
BRIGHT LIGHT CUT-OFF	YES	
AUTOMATIC SHUT-OFF WHEN RAISED	YES (REQUIRE COMPATIBLE MOUNT)	
INFRARED ILLUMINATOR	YES	
BATTERY	1 X AA	
BATTERY LIFE	UP TO 50 H	
WEIGHT	320 G	
DIMENSIONS	114 X 63 X 69 MM	





ARMAMENT



ANTOS



Both available ANTOS 60 mm models are designed for immediate ground units fire power enhancement and special ops missions. Light, portable, with variable charges – ANTOS-LR model allows a single trooper to cover a distance from 120 up to almost 3100 m with a range of NATO standard 60 mm incendiary or fragmentation explosive, smoke or IR illumination bombs. An ultra-light commando version is available for unprecedented and secured mobility and close combat.

Light weight - easily portable.

Instant firepower.

Simple design and reliable light alloy construction.

Ultralight ANTOS is equipped with liquid sights.

CREW	1-2	
CALIBER	60 MM	
RANGE	100-3,000 M	
RATE OF FIRE	UP TO 20 RPM	
	ANTOS-LR	ANTOS
WEIGHT	15,9 KG	5,3 KG
WITH ACCESSORIES	43 KG	19 KG
BARREL LENGTH	1,000 MM	650 MM
MOBILITY	PORTABLE	PORTABLE, TRIGGER FIRING MODE AVAILABLE
AMMUNITION	60 MM HEI - HIGH EXPLOSIVE INCENDIARY	60 MM HEI - HIGH EXPLOSIVE INCENDIARY
	60 MM HEF - HIGH EXPLOSIVE FRAGMENTATION	60 MM HEF - HIGH EXPLOSIVE FRAGMENTATION
	60 MM ILL - ILLUMINATING	60 MM ILL - ILLUMINATING
	60 MM ILL-IR - ILLUMINATING INFRARED	60 MM ILL-IR - ILLUMINATING INFRARED
	60 MM SMK - SMOKE EFFECT	60 MM SMK - SMOKE EFFECT
	60 MM JUMP - DUMMY TRAINING BOMB	60 MM JUMP - DUMMY TRAINING BOMB
PARAMETRY SPECIFICKÉ		
GUN CALIBRE	60.7 MM	60.7 MM
FIRING RANGE – MINIMUM	102 M	80 M
FIRING RANGE – MAXIMUM	3,098 M	1,200 M
ELEVATION	40-85°	40-85°
TRAVERSE	360° / 6° WITH BIPOD FIXED	360°
RATE OF FIRE – MAXIMUM	20 RPM	16 RPM

M-46



The M-46 M1954 130 mm is towed artillery field gun that was developed from a M-36 naval gun and has been produced in Russia since 1950s.

The 52 calibre barrel is mounted on a split-trail carriage that provides stability when firing. Shield provides cover against muzzle blast and machine gun and small arms fire. The gun is manually loaded with separate loading charge and projectiles.

The M-46 is still an integral part of artillery in many countries accross Middle East, Africa and Asia.

Effective and well proven artillery gun.

Long firing range.

Good mobility and fast deployment.

Direct fire and night sight option availability.

CREW		8
CALIBER		130 MM
DOSTŘEL		27,150 M
PŘEPRAVNÍ RYCHLOST		50 KM/HOD
PARAMETERS		
WEIGHT		7,700 KG
DIMENSIONS	L	11,730 MM
	W	2,450 MM
	H	2,550 MM
MOBILITY	TOP SPEED - ON ROAD	50 KM/H
AMMUNITION		130 MM HE - HIGH EXPLOSIVE
		130 MM ILL - ILLUMINATING
		130 MM SMK - SMOKE
SPECIFIC PARAMETERS		
GUN CALIBRE	130 MM	
FIRING RANGE	27,150 M (38,000 M ASSISTED)	
ELEVATION	-2.5°/45°	
TRAVERSE	50°	
RATE OF FIRE – MAXIMUM	8/MIN	
RATE OF FIRE – SUS-TAINED	5/MIN	

MACHINE GUNS



	PKM/PKT/PKB/PKS	PKMSN
CALIBRE	7.62 MM	7.62 MM
GUN LENGTH	1,100 MM	1,173 MM
RATE OF FIRE - MAXIMUM	700-800 RPM	650 RPM
MUZZLE VELOCITY	830 M/S	825 M/S
MAXIMUM RANGE	3,800 M	3,800 M
EFFECTIVE RANGE AGAINST GROUND TARGETS	1,000 M	1,000 M
WEIGHT OF THE GUN	10.5 KG	9 KG



	NSVT	DSHK	KPVT
CALIBRE	12.7 MM	12.7 MM	14.5 MM
GUN LENGTH	1,560 MM	1,625 MM	1,980 MM
RATE OF FIRE - MAXIMUM	700-800 RPM	600 RPM	600 RPM
MUZZLE VELOCITY	845 M/S	850 M/S	1,005 M/S
MAXIMUM RANGE	6,000 M	6,500 M	7,000 M
EFFECTIVE RANGE AGAINST GROUND TARGETS	2,000 M	2,000 M	3,000 M
WEIGHT OF THE GUN	25 KG	34 KG	49 KG, 39 KG ON INFANTRY TRIPOD

CZ-30



30 mm automatic cannon is suitable for infantry fighting vehicles and armoured personnel carriers such as BMP, but it can be fitted on helicopters. It is designed to engage lightly armoured targets, PTRS sets, enemy infantry or aircraft operating in low altitudes. CZ30 is equipped with recoil damping system and is favoured for its reliability and long life cycle.

Available for BMP and other IFVs as well as Mi-28, Ka-50, Ka-52 and Ka-29TB helicopters.

Reliability.

Double belt feeding.

Manual or pyro reloading (3 charges).

MUZZLE VELOCITY	360 M/S
CALIBRE	30 MM
RANGE	5,000 M
PARAMETERS	
WEIGHT	116.5 KG
DIMENSIONS	L 3,027 MM
AMMUNITION	AP-T HE HEI HE-T HETP-T
SPECIFIC PARAMETERS	
GUN CALIBRE	30 MM
FIRING RANGE	10,300 M
EFFECTIVE RANGE – ARMoured TARGETS	1,500 M
EFFECTIVE RANGE – AIRCRAFT TARGETS	2,500 M
EFFECTIVE RANGE – GROUND TARGETS	4,000 M
RATE OF FIRE – STANDARD	550 RPM
RATE OF FIRE – LOW	200-300 RPM
MUZZLE VELOCITY	960 M/S

ZU 14.5



ZU 14.5 MM

HEAVY ANTI AIRCRAFT MACHINE GUN

2/4 BARREL CONFIGURATION

PARAMETERS		ZU-2	ZU-4
WEIGHT		660 KG	1,360 KG
DIMENSIONS	L	3,870 MM	4,300 MM
	W	1,665 MM	1,900 MM
	H	1,100 MM	1,470 MM
TOP SPEED - ON ROAD		60 KM/H	60 KM/H
AMMUNITION		14.5 MM	14.5 MM



AMMUNITION

SMALL, MEDIUM AND LARGE CALIBRE AMMUNITION

- HIGH QUALITY AMMUNITION.
- ORIGINAL PRODUCTION ALLOWS FLEXIBLE DELIVERY TERMS.
- NATO AND EAST EUROPE STANDARDS AVAILABLE.

LARGE CALIBRE AMMUNITION	TYPE	DESIGNATION	WEAPONS
100 MM	CARTRIDGE	HE, HEAT, APFSDS	T-54/55, 100 MM CANNON
100 MM MT-12	CARTRIDGE	HE, HEAT, APFSDS	MT-12 CANNON
122 MM	CARTRIDGE	HE, HEAT	D30, SHK 2S1 GVOZDIKA
122 MM	CARTRIDGE	HE	VZ. 38/36, VZ. 30/78
125 MM	CARTRIDGE	HE, HEAT, APFSDS, PRACTICE	T-72, T-80
152 MM	CARTRIDGE	HE, HEAT	D-20, SHKH VZ. 77 DANA, 2S3 AKACIA
155 MM	CARTRIDGE	HEAT, PRACTICE	NATO 155 MM ARTILLERY SYSTEMS
LARGE CALIBRE AMMUNITION - ROCKETS	TYPE	DESIGNATION	WEAPONS
122 MM	CARTRIDGE	HE-F	RM-70, BM-21
SMALL CALIBRE AMMUNITION	TYPE	DESIGNATION	WEAPONS
5.56 X 45 NATO	CARTRIDGE	STANDARD	ASSAULT RIFLES
7.62 X 39	CARTRIDGE	STANDARD, AP-T, AP, PRACTICE	ASSAULT RIFLES (AK-47, SA-58 ETC.)
7.62 X 54R	CARTRIDGE	STANDARD	MACHINE GUNS (PKM, PKT, UK-59)
MEDIUM CALIBRE AMMUNITION	TYPE	DESIGNATION	WEAPONS
12.7 X 108 MM	CARTRIDGE	API	DSHK, NSV
14.5 X 114 MM	CARTRIDGE	API, HEI	KPVT
23 X 152 MM	CARTRIDGE	API-T, HE-I-T	ZU-23, ZSU-23
30 MM X 165 MM	CARTRIDGE	HE-I, AP-T	2A42 (BMP-2)
30 MM	GRENADE	HE	AGS
PG-7	CARTRIDGE	HEAT	RPG-7
MEDIUM CALIBRE AMMUNITION - PG	TYPE	DESIGNATION	WEAPONS
73 MM PG-15 V	GRENADE	HEAT	2A28 (BMP-1)
73 MM OG-15 V	GRENADE	HE	2A28 (BMP-1)
RPG-75 M	GRENADE	HE	SELF
MORTAR MINES	TYPE	DESIGNATION	WEAPONS
82 MM	MORTAR MINE	HE	MORTARS
120 MM	MORTAR MINE	HE	MORTARS



APCs



BMP1



The BMP-1 is an amphibious tracked infantry fighting vehicle designed to transport the troops to the battlefield and to provide direct fire support, including engagement against enemy armoured vehicles.

The platform features high maneuverability and excellent off-road capability. With regard to the vehicle armament /73 mm 2A28 Grom gun firing HEAT rounds and launcher for the 9M14 Maljutka ATGM/ it is often classified as the „Tank Destroyer“.

MANEUVERABILITY

Excellent maneuverability and superior off-road capability, high travel speed.

EFFECTIVE

Highly reliable, ease of control, simple design.

PROVEN DESIGN

Timeless concept and the overall arrangement whilst keeping the low-silhouetted vehicle profile.

AMPHIBIOUS CAPABILITY

Vehicle suitable for immediate fording and water obstacle crossing.

LIFE-CYCLE EFFICIENCY

Large spare parts availability.

CREW		3+8
ARMOUR		6-23 MM
TOP SPEED - ON ROAD		65 KM/H
PARAMETRY		
WEIGHT		13 T
DIMENSIONS	L	6,735 MM
	W	2,940 MM
	H	1,924 MM
ENGINE	TYPE	UTD-20
	OUTPUT	220 KW
MOBILITY	TOP SPEED - ON ROAD	65 KM/H
	TOP SPEED - OFF ROAD	40 KM/H
	CRUISING RANGE	600 KM
	FORDING DEPTH (INSTANT)	SWIMMING ABILITY
	GRADIENT	35°
	SIDE SLOPE	25°
	OBSTACLE	0.7 M
	TRENCH CROSSING	2.0 M
ARMAMENT	MAIN	73 MM SEMI-AUTOMATIC GUN 2A28
		9M 14M ATGM (MALJUTKA) / OPTIONALLY WITH-OUT THE LAUNCHER
	SECONDARY	7.62 MM PKT COAXIAL MACHINE GUN
AMPHIBIOUS CAPABILITY		THE BMP-1 IS AMPHIBIOUS, PROPELLING ITSELF IN THE WATER USING ITS TRACKS, ASSISTED BY HYDRODYNAMIC FAIRINGS ON THE TRACK UPPER SIDE COVERS. TOP SWIMMING SPEED IS 7 KM/H.
UTD-20		6-CYLINDER
		V 120 DEGREES
		DIRECT INJECTION
		4 STROKE
		WATER COOLED

BRDM2



The BRDM-2 is an amphibious armoured patrol vehicle featuring the 4x4 all-wheel drive conception. It has two pairs of belly wheels lowered by the driver to allow trench crossing.

The vehicle has been designed as light reconnaissance and command vehicle. The BRDM-2 well-proven platform was further deployed as a carrier of special mission kits intended mostly for combat reconnaissance and radiation and chemical reconnaissance and also as a carrier of fire support to combat arms, the 9P133 (9K11 Maljutka), 9P148 (9K113 Konkurs and 9K111 Fagot) ATGM and the 9P31M (9K31 Strela-1M) AAGM launching platform, artillery observation and other.

GREAT TERRAIN PERFORMANCE

Amphibious at high travel speed. Wider trench crossing capability.

EASY ROAD DEPLOYMENT

High road speed and cruising range.

EASY TO PROCURE

Affordable vehicle and armament.

AMPHIBIOUS CAPABILITY

Vehicle suitable for immediate fording and water obstacle crossing.

CREW		4
TOP SPEED		105 KM/H
PARAMETERS		
WEIGHT		7 T
DIMENSIONS	L	5,750 MM
	W	3,415 MM
	H	2,310 MM
ENGINE	TYPE	GAZ-41 V8
	OUTPUT	103 KW
MOBILITY	TOP SPEED - ON ROAD	95 KM/H
	TOP SPEED - OFF ROAD	30 KM/H
	CRUISING RANGE	750 KM
	FORDING DEPTH (INSTANT)	SWIMMING ABILITY
	GRADIENT	60°
	SIDE SLOPE	30°
	OBSTACLE	4.0 M
	TRENCH CROSSING	1.25 M

SPECIFIC PARAMETERS		
ARMAMENT	MAIN	14.5 MM KPVT HEAVY MACHINE GUN
	SECONDARY	7.62 MM PKT COAXIAL MACHINE GUN

LAYOUT	The driver's and commander's stations are in the front of the vehicle, with the driver positioned on the left and commander on the right. Both of them sit in front of a bulletproof windscreen, which provides them with their primary view of the battlefield. When in combat, the windscreen can be additionally protected by twin shutters. Armoured shutters.	
--------	--	--

HIGHLY MOBILE VEHICLE	It has two pairs of chain-driven belly wheels lowered by the driver, which allow trench crossing, and a centralized tire pressure regulation system, which can be used to adjust the tire pressure of all four tires or individual tires while the vehicle is in motion to suit to the ground conditions.	
-----------------------	---	--

OT64



The OT-64 SKOT /“medium wheeled armored carrier“/ is an amphibious armored personnel carrier, developed jointly by Czechoslovakia and Poland. The 8x8 buoyant four-axle platform featuring armored and watertight hull has been designed to transport the infantry to the battlefield.

The SKOT 2A variant also provides direct fire support /fitted with the armored movable gun turret from the BTR-60 PB armed with the 14.5 mm KPVT heavy machine gun and the 7.62 mm PKT coax machine gun/.

SPACE FOR TROOPS

Enabling transport of greater number of troops/crew members.

EASY TO HANDLE

Easily maneuverable.

AMPHIBIOUS CAPABILITY

Vehicle is suitable for immediate fording and water obstacle crossing.

GOOD MOBILITY

Superior floating capabilities. High road and off-road speed.

CREW	3+8
ARMOUR	6 -15 MM
MAX SPEED	94 KM/H

PARAMETERS

WEIGHT		12.2 T
DIMENSIONS	L	7,440 MM
	W	2,500 MM
	H	2,060 MM
ENGINE	TYPE	TATRA 928-14
	OUTPUT	132.5 KW
MOBILITY	TOP SPEED - ON ROAD	95 KM/HOD
	TOP SPEED - SWIMMING	9 KM/HOD
	CRUISING RANGE	700 KM
	FORDING DEPTH (INSTANT)	SWIMMING ABILITY
	GRADIENT	35°
	SIDE SLOPE	43°
	OBSTACLE	0.4 M
	TRENCH CROSSING	2.0 M

SPECIFIC PARAMETERS

ARMAMENT	MAIN	14.5 MM KPVT HEAVY MACHINE GUN
	SECONDARY	7.62 MM PKT COAXIAL MACHINE GUN

LARGE CAPACITY This armored personnel carrier has a crew of 2-3 and accommodates up to 18 fully-equipped troops (non turreted version) - amount depending on the version of the vehicle.

LAYOUT The troop compartment is located at the hull rear. Soldiers dismount via rear doors or roof hatches. Commander and driver dismount via their individual side or roof hatches. There are firing ports provided for the troops.

PANDUR



PANDUR vehicle was developed upon the Czech Army request but the platform has already been well-proven in the armies worldwide.

The amphibious wheeled armoured personal carrier with armour and waterproof body is capable of effective water gap, water reservoir or coastal water crossing. PANDUR vehicle has proven itself with superior off-road mobility, maneuverability and high reliability and resistance. In addition to the basic personal carrier function, the vehicle can be modified and fitted with various types of weapon stations up to 105 mm calibre, the mortar or other special equipment.

OPTIMAL CREW SAFETY AND COMFORT

Air-conditioning, comfortable seats, hydraulic ramp, independent wheel suspension. Optimized STANAG 4569 and NBC protection.

DESIGNED FOR OFF-ROAD

High off-road mobility capabilities, heavy duty chassis, break steering, CTIS and ADM for perfect power delivery and great swimming abilities.

EFFICIENT MOBILITY

low fuel consumption extends the cruising range for easier long distance deployment.

UPGRADES AVAILABILITY

A range of upgrades for easier maneuverability (e.g. automatic transmission), firepower and protection enhancement.

CREW		4+7
		*CREW AND TROOP CAPACITY DEPENDS ON THE CONFIGURATION. W/O TURRET THE VEHICLE CARRIES UP TO 2+12.
BALLISTIC PROTECTION		LEVEL 1-4 / STANAG 4569
ANTI-MINE PROTECTION		LEVEL 1-4 / STANAG 4569
MAX SPEED		105 KM/H
PARAMETERS		
WEIGHT		18.7 T
DIMENSIONS	L	7,384 MM
	W	2,670 MM
	H	3,987 MM
ENGINE	TYPE	CUMMINS DIESEL ISLE T450 HPCR
	OUTPUT	335.6 KW
MOBILITY	TOP SPEED - ON ROAD	105 KM/H
	TOP SPEED - OFF ROAD	32 KM/H
	CRUISING RANGE	700 KM
	FORDING DEPTH (INSTANT)	1.5 M/ SWIMMING ABILITY (AMPH CONFIGURATION)
	GRADIENT	35°
	SIDE SLOPE	30°
	OBSTACLE	0.6 M
	TRENCH CROSSING	2.2 M
SPECIFIC PARAMETERS		
ARMAMENT (STANDARD)	MAIN	30 MM AUTOMATIC CANNON MK 44/ SPIKE-LR ATGM
	SECONDARY	7.62 MM COAX MG FN MAF (M240)
		76 MM SGL TYPE WEGMANN /8 UNITS/
AVAILABLE CONFIGURATIONS	AMPHIBIOUS INFANTRY CARRIER INFANTRY FIGHTING VEHICLE MORTAR OR ATGM CARRIER COMMUNICATION VEHICLE RECONNAISSANCE VEHICLE (RADAR OPTIONAL) ENGINEERING VEHICLE ARMOURED AMBULANCE COMMAND POST	
RCWS SAMSON MK II ADVANTAGES	UNDER ARMOR RELOADING LOW SILHOUETTE WIDE RANGE OF WEAPONS PORTABLE OPTIONAL ATGM AND SGL EFFECTORS 360° TRAVERSE, -20° TO +70° ELEVATION (VEHICLE RESTRICTIONS MAY APPLY)	

PATRIOT



The armoured tactical vehicle featuring high maneuverability is intended for deployment with Rapid Reaction Forces to carry out reconnaissance and patrol duties, especially during asymmetric mission, and further serving as a carrier platform for light motorized units. The vehicle, as a unified platform of vehicle family for defence and civil safety applications, can be fitted with a wide range of mission kits - recon, communication and information, command and staff, chemical, medevac and other.

ON-ROAD/OFF-ROAD MOBILITY

TATRA FORCE chassis, clearance adjustment on the go, automatic transmission for exceptional terrain performance, yet vehicle is perfectly fit for common road traffic.

VERSATILE PLATFORM

Mission kit can be modified as per customer request.

PROTECTION

Crew comfort and safety - ballistic and anti-mine protection, A/C, NBC filtration system.

SAFETY AND ENDURANCE

Fire-extinguishing system for the cabin and the engine, anti-mine seats, long range of 500 km.

SUITABLE FOR EVERY ENVIRONMENT

Optional engines - air/water cooled, mission kits and other customization as required.

CREW		1+1+4
BALLISTIC PROTECTION		2 -3 - STANAG 4569
ANTI-MINE PROTECTION		2A/2B - STANAG 4569
MAX SPEED		110 KM/H
PARAMETERS		
COMBAT WEIGHT		12 -15 T (ACCORDING TO PROTECTION TYPE AND VEHICLE EQUIPMENT)
DIMENSIONS	L	6,100 MM
	W	2,225 MM
	H	2,700 MM
ENGINE	WHEELBASE	3,500 MM
	TYPE A	CUMMINS ISBE / WATER COOLED
	TYPE B	TATRA T3C-928 / AIR COOLED
MOBILITY	OUTPUT A	210 KW
	OUTPUT B	230 KW
	TOP SPEED - ON ROAD	110 KM/H
	TOP SPEED - OFF ROAD	45 KM/H
	CRUISING RANGE	500 KM
	FORDING DEPTH (INSTANT)	1.2 M
	GRADIENT	45°
	SIDE SLOPE	33°
	OBSTACLE	0.5 M
	TRENCH CROSSING	0.9 M
SPECIFIC PARAMETERS		
ARMAMENT	MAIN	UP TO 14.5 MM RCWS
	OPTIONS AVAILABLE	7.62 / 12.7 MM / 14.5 MM MANNED GUN TURRET MORTAR (PICK-UP VEHICLE VERSION) AG/SG LAUNCHERS ATGM LAUNCHERS
TATRA CHASSIS	OUTSTANDING MOBILITY AND OBSTACLE CROSSING CAPABILITIES - HIGH SPEED IN ROUGH TERRAIN CONDITIONS. VARIABLE GROUND CLEARANCE THANKS TO AIR SUSPENSION SYSTEM.	
SOFT-TOP (CABRIO VEHICLE VERSION)	SPECIAL OPERATIONS VARIANT - AN EXAMPLE OF THE PATRIOT'S MODULARITY.	

PATRIOT II



The PATRIOT II is an upgraded modular wheeled combat tactical vehicle that features excellent mobility in difficult terrain thanks to the unique TATRA chassis. It offers wide range of mission kits and armament choices - remote or manually controlled machine guns, or even a 20 mm cannon with superior firepower, grenade launchers or ATGMs.

The vehicle provides a unified platform for the „PATRIOT family“ of defence and civil safety applications, such as reconnaissance, special operations, communications, command and control, chemical, medevac, EOD, PSYOPS, riot control, and of course troops transport or direct combat. Any configuration is possible for the PATRIOT.

PROLONGED VERSION

PATRIOT II offers various upgrades over the original PATRIOT, one of them being the prolonged and wider cabin with higher capacity for crew or special equipment.

ON-ROAD/OFF-ROAD MOBILITY

TATRA FORCE chassis, clearance adjustment on the go, automatic transmission for exceptional terrain performance, yet vehicle is perfectly fit for common road traffic.

VERSATILE PLATFORM

Mission kit can be modified as per customer request.

PROTECTION

Ballistic and anti-mine protection, A/C, NBC filtration system.

SAFETY & ENDURANCE

Fire-extinguishing system for the cabin and engine, anti-mine seats, optional jammers coupled with a long range of 700 km.

CREW		1+1+6
MAX SPEED		110 KM/H
PARAMETERS		
COMBAT WEIGHT		13.5 - 18 T (ACCORDING TO PROTECTION TYPE AND VEHICLE EQUIPMENT)
DIMENSIONS	L	6,250 MM
	W	2,550 MM
	H	2,700 MM
ENGINE	TYPE A	CUMMINS ISL, EURO III
	TYPE B	TATRA T3C-928-90, EURO III
	OUTPUT A	270 KW
	OUTPUT B	300 KW
MOBILITY	TOP SPEED - ON ROAD	110 KM/H
	TOP SPEED - OFF ROAD	45 KM/H
	CRUISING RANGE	700 KM
	FORDING DEPTH (INSTANT)	1.2 M
	GRADIENT	45°
	SIDE SLOPE	33°
	OBSTACLE	0.5 M
	TRENCH CROSSING	0.9 M

SPECIFIC PARAMETERS		
ARMAMENT	MAIN	UP TO 20 MM RCWS
	OPTIONS AVAILABLE	7.62 / 12.7 MM / 14.5 MM MANNED GUN TURRET MORTAR (PICK-UP VEHICLE VERSION) AG/SG LAUNCHERS ATGM LAUNCHERS
OPTIONS	HIGH PAYLOAD & GREAT MOBILITY	
	WEAPON STATION ARX 20 APPLICATION BY NEXTER SYSTEMS	

TRITON



TRITON is a specialty improved command-reconnaissance vehicle designed to support the civil sector emergency services. Specific vehicle design ensures operation at extreme terrain conditions and environment with high degree risk to safety of water engine, chassis and fire-extinguishing technology. Vehicle has been designed to be deployed in:

- areas where unexploded explosive ordnance may occur
- areas where pressure bottles and containers may occur
- areas to remove residues after the terrorist attack
- chemical and petrochemical plants
- large-scale natural, especially forest fire
- research and monitoring of contaminated zone
- rescue services, if needed

- PUMPING DEVICE**
Vehicle is equipped with a pump featuring 1 500 l/ min nominal flow, 2 000 l water tank and bumper fire monitor.
- SEARCHING LIGHT**
Rotating searching light with luminous flux 3 000 lm controlled from the crew cab is located at the vehicle rooftop. The searching ight is rotating 270° horizontally and 120° vertically.
- BUMPER FIRE MONITOR**
The vehicle is equipped with the ALCO APF2-DC bumper fire monitor at the front-end section controlled from the crew cab.
- SELF-PROTECTIVE NOZZLES**
The vehicle is equipped with water cooling installation as a heat protection. Set of nozzles ensures surface cooling of superstructure body and crew cab with optional timer setting.
- ACCESSORIES AND EQUIPMENT**
The vehicle includes fire fighting items at the rear part of the superstructure storage compartment. Part of equipment is an electric winch with 5 tons pull, 30 m long rope and 10 m control cable.
- CONTROL PANEL**
Cabin driver control panel includes both NBC and A/C controls as well as Télэфlow CTIS enabling change in tyre pressure during driving. The vehicle is further equipped with the all-round view camera system.

CREW	2+2	
	WATER TANK CAPACITY 2 000 L	
	MAX SPEED 110 KM/H	
	NEW PRODUCT	
	BALLISTIC PROTECTION	LEVEL 2
	MINE PROTECTION	LEVEL 2A/2B
PARAMETERS		
WEIGHT	13.5 - 18 T (ACCORDING TO PROTECTION TYPE AND VEHICLE EQUIPMENT)	
DIMENSIONS	LENGTH	6,250 MM
	WIDTH	2,550 MM
	HEIGHT	2,800 MM
	WHEELBASE	3,650 MM
ENGINE	TYPE	TATRA T3C-928.90, EURO III
	POWER	300 KW
MOBILITY	TOP SPEED - ON ROAD	110 KM/H
	TOP SPEED - OFF ROAD	45 KM/H
	CRUISING RANGE (NO FUEL CANS)	600 KM
	FORDING DEPTH (INSTANT)	1.2 M
	GRADIENT	45°
	STATIC SIDE SLOPE	30°
	CLIMBING ABILITY	0.5 M
	TRENCH CROSSING	0.9 M
SPECIFIC PARAMETERS		
PUMPING DEVICE - THT PJA 1500 PUMP	NOMINAL FLOW	1,500 L/MIN
	NOMINAL MANOMETER PRESSURE	1,0 MPA
	NOMINAL SUCTION HEAD	3 M
TANK	2,000 L	
FENDER NOZZLE	TYPE	ALCO APF 2-DC
	NOZZLE	MTV 2000
	FOAM EXTENSION	SWA 2000
	CONTROL	REMOTE CONTROL (JOYSTICK)



The armoured tracked infantry fighting vehicle has been designed to transport infantry troops to the battlefield and to provide direct fire support, including engagement against enemy armoured vehicles.

Featuring the increased level of ballistic protection, high and easy maneuverability and possibility to fit wide range of special systems, the vehicle has been pre-determined for deployment at asymmetric missions.

The platform can be fitted with many different types of mission kits - recon, engineering, medical, recovery, workshop, communication and information, command and staff and other.

INCREASED PROTECTION
Level 2, optionally higher.

EASIER HANDLING
Automated transmission, decrease of driver's workload, easier vehicle handling.

ENLARGED INTERIOR
Bigger compartment and improved interior arrangement to transport the unit, advanced ergonomics, troops boarding and exit much more effective.

OPEN ARCHITECTURE
Enabled versatility to installation of weapon systems, passive and active protection, communication systems and other military technology.

PLATFORM CONSISTENCY
Spare parts and servicing procedures highly consistent with the original BMP-1 and BMP-2 platform, especially chassis and transmission mechanisms and vehicle turning mechanism.

CREW	3+6
BALLISTIC PROTECTION	3 - STANAG 4569
ANTI-MINE PROTECTION	2A/1 - STANAG 4569
TOP SPEED - ON ROAD	65 KM/H

PARAMETERS		
WEIGHT		18.8 T
DIMENSIONS	L	6,753 MM
	W	3,047 MM
	H	2,760 MM
ENGINE	TYPE	CATERPILLAR C9.3
	OUTPUT	300 KW
MOBILITY	TOP SPEED - ON ROAD	65 KM/H
	TOP SPEED - OFF ROAD	45 KM/H
	CRUISING RANGE	400 KM
	FORDING DEPTH (INSTANT)	1.3 M
	GRADIENT	35°
	SIDE SLOPE	30°
	OBSTACLE	0.7 M
	TRENCH CROSSING	2.5 M

SPECIFIC PARAMETERS		
ARMAMENT	TURRETS	TURRA 30 TURRET
	OPTIONS AVAILABLE	SAMSON MK II OR DVK 30 GUN TURRET
	WEAPONS	<ul style="list-style-type: none">Stabilized 30 mm 2A42 / CZ-30 autocannon7.62 mm PKT coaxial machine gunBACK RAMPRemoves the disadvantage of the original solution and allows for easy entry by the troops.THOROUGHLY MODERNIZED INTERIORNew ballistic seats and more room for the whole crew. Also new controls for driver, commander and gun operator.



ARTILLERY SYSTEMS



BM-21 MT



The BM-21 MT is a mobile platform for the 40-round high explosive fragmentation artillery system providing concentrated fire support to the troops over large target areas covering ranges depending on the type of used shell. It is an upgraded variant of the Russian BM-21 Multiple Rocket Launcher. The rocket launcher can fire both single rounds and volleys from the cab or via remote control device from a nearby trench.

The principal mode of fire is indirect fire, direct fire can be performed only within the range determined by traverse and elevation sensors.

The original URAL chassis was replaced with the T-815-7 chassis with air axle suspension.

EQUIPMENT

Independent heating and depend air condition (AC unit)

OPTIONAL EQUIPMENT

Independent air condition, NBC filtration systém unit and auxiliary power unit (APU).

NEW TATRA CHASSIS

The vehicle chassis is the newest generation of TATRA military vehicles with exceptional terrain handling.

CREW		1+2	
DOSTŘEL		UP TO 40 KM	
PODVOZEK		TATRA	
NEW CONTROL BOXES		FITTED WITH THE LATEST ELECTRONIC COMPONENTS	
AREA OF EFFECT	SINGLE ROUND	3,000 M2	
	VOLLEY (40ROCKETS)	DO 30,000 M2 (3 HA)	
PARAMETERS			
WEIGHT		16.3 T	
DIMENSIONS	L	7,370 MM	
	W	2,550 MM	
	H	2,730 MM (
UNDERCARRIAGE		T815-7T3R21 4X4.1R WITH LOW CAB	
ENGINE	TYPE	TATRA T3C-928.81, V8	
	OUTPUT	270 KW	
MOBILITY	TOP SPEED - ON ROAD	90 KM/H	
	TOP SPEED - OFF ROAD	30 KM/H	
		CRUISING RANGE	1,200 KM
		FORDING DEPTH (INSTANT)	1.2 M
		GRADIENT	45°
		SIDE SLOPE	20°
		OBSTACLE	0.6 M
		TRENCH CROSSING	0.9 M
SPECIFIC PARAMETERS			
ARMAMENT	MAIN	122 MM JROF ROCKETS /40+40/ MAX.RANGE 20.4/40.1 KM - OPTIONAL	
ZIP 1:1	The logistic kit of spare parts, tools and accessories is intended for superstructure operating, replacing defective parts, for repairing minor faults by the crew and for launcher maintenance.		

BM-21 MU



The BM-21 MU is a mobile platform for the 40-round high explosive fragmentation artillery system providing concentrated fire support to the troops over large target areas covering ranges depending on the type of used shell. It is an upgraded variant of the Russian BM-21 Multiple Rocket Launcher.

The rocket launcher can fire both single rounds and volleys from the cab or via remote control device from a nearby trench. Modernization preserves tactical and technical features of BM-21 chassis. The principal mode of fire is indirect fire, direct fire can be performed only within the range determined by traverse and elevation sensors.

FULFILLING NATO STANAG REQUIREMENTS

The life cycle of the equipment is at the same level as in the original BM-21. All electronic parts has resistance -20° to +55° and humidity 95%.

DIFFERENCES OLD BM-21 AND NEW BM-21 MU

Old system allowed firing only from prepared combat position. Procedure of preparing that position, reaching it, getting into fire direction and leaving combat position was quite time-consuming. Goal of a new system is fully automatic mode of aiming and firing, which reduce time needed for assuming combat position and increase fire effectivity and accuracy in the target area.

EASY SERVICE

Secures maintaining of the URAL platform and its logistic system.

CREW		1+2
RANGE		UP TO 40 KM
NEW CONTROL BOXES		FITTED WITH THE LATEST ELECTRONIC COMPONENTS
AREA OF EFFECT	SINGLE ROUND	3,000 M2
	VOLLEY (40 ROCKETS)	DO 30,000 M2 (3 HA)
PARAMETRY		
WEIGHT		13.7 T
DIMENSIONS	L	7,350 MM
	W	2,490 MM/2,690 MM INCL. REAR-VIEW MIRRORS
	H	3,090 MM
UNDERCARRIAGE		URAL-375D, 6X6
ENGINE	TYPE	ZIL 375, V8
	OUTPUT	134.2 KW
MOBILITY	TOP SPEED - ON ROAD	75 KM/H
	TOP SPEED - OFF ROAD	25 KM/H
	CRUISING RANGE	MIN 600 KM
	FORDING DEPTH (INSTANT)	1.5 M INCL. FORDING WAVE
	GRADIENT	40°
	SIDE SLOPE	18°
	OBSTACLE	0.5 M
	TRENCH CROSSING	0.6 M
ARMAMENT	MAIN	122 MM JROF ROCKETS /40 ROCKETS/
		MAX.RANGE 20.4/40.1 KM - OPTIONAL
COMPLEX LOGISTIC SUPPORT	For our mlrs systems we also offer munition vehicles, battery command vehicles, vehicles for forward observers, battalion command vehicle, fuel trucks, mobile workshops and recovery vehicles.	

DANA M2



The 152 mm DANA vz. 77 self-propelled gun howitzer has gone through a major modernization presenting the most recent DANA M2 system featuring high speed in taking up and leaving the firing position, greater accuracy and excellent hard terrain crossability.

Thanks to the new more resistant cabin and the NBC filtration system the DANA M2 provides the crew with the highest level of comfort and protection. The newly implemented automatic guiding system allows fast and fully-automatic weapon adjustment into fire position.

BALLISTIC PROTECTION

Cabin according to STANAG 4569 Level I.

ON-BOARD DIAGNOSTIC

Integrated diagnostic system with automatic record of operating units.

CREW COMFORT

High performance heating, A/C and NBC filtration system.

EXTRA POWER

Auxiliary power unit is available, including a hydraulic pump.

CREW	1+4	
CALIBER	152 MM	
DOSTŘEL	25,5 KM	
TOP SPEED	90 KM/H	
WEIGHT	30.2 T	
DIMENSIONS	L	11,456 MM
	W	3,000 MM
	H	3,350 MM
ENGINE	TYPE	TATRA T3-930-52M, V12
	OUTPUT	265 KW
MOBILITY	TOP SPEED - ON ROAD	90 KM/H
	TOP SPEED - OFF ROAD	25 KM/H
	CRUISING RANGE	600 KM
	FORDING DEPTH (INSTANT)	1.4 M
	GRADIENT	30°
	SIDE SLOPE	15°
	OBSTACLE	0.6 M
	TRENCH CROSSING	2.0 M
	ARMAMENT	MAIN
	FIRING RANGE	20,000 M (25,500 M WITH DN1CZ AMMUNITION)
	ELEVATION	-4° / 70°
	TRAVERSE	±225° ±45° A FULL RANGE ELEVATION ±220° WITH ELEVATION TO 10° (EXCEPT DNCZ)
	RATE OF FIRE – 1ST MINUTE	5/MIN.
	RATE OF FIRE – SUSTAINED	4/MIN.
	CARRIED AMMUNITION	40
	SECONDARY WEAPON	12.7 MM NSVT ANTI-AIRCRAFT MACHINE GUN
CONTROL PANEL	BASIC SCREEN SEMI-AUTOMATIC AIMING USING ARROWS SEMI-AUTOMATIC AIMING USING DIAL OPTIONAL AMMUNITION SELECTION SUBSYSTEM NEW CONTROLS	
	VEHICLE IS EQUIPPED WITH NEW ERGONOMICALLY DISTRIBUTED DRIVER'S AND COMMANDER'S CONTROLS (VEHICLE CONTROLS, C2I SYSTEMS, FCS, FVS, CTIS, ETC.).	
	AUTOMATIC GUN AIMING	
	DANA M2 HOWITZER IS EQUIPPED WITH SPECIAL A.S.A.P. SYSTEM (AUTOMATIC SETTING OF ACTION POSITION) AND WITH AN AMMUNITION CONTROL SYSTEM WHICH GREATLY ENHANCE THE SPEED OF TASK EXECUTION AND OVERALL EFFECTIVITY OF THE WEAPON.	
	APHU	
	AUXILIARY 24 V SOURCE WITH A HYDRAULIC PUMP ALLOWS EMERGENCY CONTROL OF GUN, BATTERY CHARGING AND ELECTRICAL SYSTEM POWERING IN CASE OF ACCIDENTAL ENGINE STOPPING.	
	IMPROVED UNDERCARRIAGE	
	IMPROVED ENGINE, NEW CLUTCH, SEMI-AUTOMATIC TATRA NORGREN TRANSMISSION, NEW STEERING WITH SERVO, DIAGNOSTICS AND OTHER IMPROVEMENTS. ACTIVATION AND RETRACTION OF SUPPORT PADS IS 65% FASTER.	

DITA 155 MM



The 155 mm DITA self-propelled howitzer is a new modern artillery weapon using a NATO standard 155 mm ammunition. It derives from the original Czechoslovak concept of Tatra truck-mounted howitzers, but it takes the autonomy of operation into a new level - DITA offers an unprecedented rate of fire with only 2 members of the crew (driver and commander). It features a modern Onboard Control System, high speed in taking up and leaving the firing position, great accuracy and excellent hard terrain crossability.

Onboard Control System includes apart from that the ballistic computer and subsystems of diagnostic, inertial navigation, automatic gun guiding, autonomous shooting elements calculation and ammunition management. The crew is located in a protected cabin during the combat operation. The howitzer is equipped with an automatic guiding system that allows fast and fully-automatic weapon adjustment into fire position.

155 mm CALIBER

The DITA uses a standard 155 mm caliber ammunition on a gun of 45 caliber, easily available with extensive range up to 39 km.

MINIMAL CREW REQUIREMENTS

Thanks to full automation of the system, the vehicle is operated by a crew of only 2 - driver and commander.

CREW COMFORT AND PROTECTION

High performance heating, A/C and NBC filtration system. Cabin protected according to STANAG 4569 Level I.

CONTROL OF FIRE	ONBOARD CONTROL SYSTEM WITH BALLISTIC COMPUTER
SOFISTICATED USER INTERFACE	
THANKS TO THE DIGITAL INTERFACE THE OCS IS READY FOR IMPLEMENTATION OF BALLISTIC COMPUTER AND COMMUNICATION SYSTEM ACCORDING TO CUSTOMER REQUIREMENTS.	
AUTOMATIC GUN AIMING	
THE DITA HOWITZER IS EQUIPPED WITH A SPECIAL A.S.A.P. SYSTEM (AUTOMATIC SETTING OF ACTION POSITION), AMMUNITION MANAGEMENT AND INERTIAL NAVIGATION SYSTEM WHICH GREATLY ENHANCE THE SPEED OF TASK EXECUTION AND OVERALL EFFECTIVITY OF THE WEAPON.	
APHU	

CREW	1+1
MAX SPEED	90 KM/H
RANGE	39 KM
155 MM CALIBER	
THE DITA USES A STANDARD 155 MM CALIBER AMMUNITION ON A GUN OF 45 CALIBER, EASILY AVAILABLE WITH EXTENSIVE RANGE UP TO 39 KM.	
MINIMAL CREW REQUIREMENTS	
THANKS TO FULL AUTOMATION OF THE SYSTEM, THE VEHICLE IS OPERATED BY A CREW OF ONLY 2 - DRIVER AND COMMANDER.	
CREW COMFORT AND PROTECTION	
HIGH PERFORMANCE HEATING, A/C AND NBC FILTRATION SYSTEM. CABIN PROTECTED ACCORDING TO STANAG 4569 LEVEL I.	
PARAMETERS	
	29 T
L	13,020 MM
W	3,085 MM
H	3,122 MM
TYPE	TATRA T3C-928-90
OUTPUT	300 KW
TOP SPEED - ON ROAD	90 KM/H
TOP SPEED - OFF ROAD	25 KM/H
CRUISING RANGE	600 KM
FORDING DEPTH (INSTANT)	1.2 M
GRADIENT	30°
SIDE SLOPE	15°
VERTICAL OBSTACLE	0.47 M
TRENCH CROSSING	2.0 M
SPECIFIC PARAMETERS	
MAIN	155 MM GUN
FIRING RANGE	39,000 M
ELEVATION	-3° / 70°
TRAVERSE	± 60°
GUIDING MODES	AUTOMATIC / MANUAL / EMERGENCY
LOADING	LOADING AUTOMAT
RATE OF FIRE - 1ST MINUTE	6/MIN.
RATE OF FIRE - SUSTAINED	5 /MIN.
CARRIED AMMUNITION IN CONVEYORS	40 PCS

RM-70 M1



The RM-70 M1 is a forty-tube, multi-launch, self-propelled rocket artillery system with a loading device, which is used to provide converging fire support for troops, firing unitary high-explosive fragmentation rocket projectiles (122-JROF-RM-70) at larger area targets.

The RM-70 M1 is a hugely upgraded variant of the original Czechoslovak RM-70 GRAD MLRS with a loading device.

The rocket launcher can fire both single rounds and volleys from the cab or using a portable device from a nearby trench. The basic type of the fire is indirect fire. If a combat operation requires direct fire with elevation from 0° to 10°, it can only be done within the range determined by elevation and traverse sensors.

The original T-813 chassis was replaced with the new T815-VPR 9M chassis with air axle suspension.

ARMoured CABIN

The cabin is armoured type, low profile, prolonged with two doors. The interior can be heated with the use of independent heating or cooled down by means of the depend or independent air conditioning system.

NEW TATRA CHASSIS T815-VPR 9M

Overall design of whole system increased by unique Tatra chassis T815-VPR 9M with its high cruising speed and high cross-country capability, good maneuverability and excellent chassis properties.

CREW COMFORT

Easier and safer vehicle handling by the driver, semi-automatic Norgren gear-shifting system and better comfort of the crew when travelling.

CREW		1+3
RANGE		UP TO 40 KM
CHASSIS		TATRA
NEW CONTROL BOXES		FITTED WITH THE LATEST ELECTRONIC COMPONENTS
AREA OF EFFECT	SINGLE ROUND	3,000 M2
	VOLLEY (40ROCKETS)	DO 30,000 M2 (3 HA)
PARAMETERS		
WEIGHT		25.9 T
DIMENSIONS	L	9,250 MM
	W	2,590 MM
	H	3,050 MM
PODVOZEK		T 815 - VPR9M 29 265 8X8.1R WITH ARMoured CAB AND FILTRATION SYSTEM
ENGINE	TYPE	TATRA T3-930 -50M , V12
	OUTPUT	264 KW
MOBILITY	TOP SPEED - ON ROAD	85 KM/H
	TOP SPEED - OFF ROAD	25 KM/H
	CRUISING RANGE	1,000 KM
	FORDING DEPTH (INSTANT)	1.2 M
	GRADIENT	27°
	SIDE SLOPE	18°
	OBSTACLE	0.5 M
	TRENCH CROSSING	2.0 M
SPECIFIC PARAMETERS		
ARMAMENT	MAIN	122 MM JROF ROCKETS /40+40/
		MAX.RANGE 20.4/40.1 KM - OPTIONAL
RM-70 M1	When equipped with the FCS, the vehicle can function alone or traditionally for increased firing volume as a part of a larfer battery.	
TATRA T 815 CHASSIS	The TATRA T 815 is a proven and reliable vehicle with good availability of spare parts.	

RM-70 VAMPIRE 4D



The RM-70 VAMPIRE 4D 8x8 is a mobile platform for the 40-round high explosive fragmentation artillery system providing concentrated fire support to the troops covering large target areas at ranges depending on the type of used shell. The RM-70 VAMPIRE 4D 8x8 is a hugely upgraded variant of the original Czechoslovak RM-70 GRAD MLRS with a re-loading device.

The rocket launcher can fire both single rounds and volleys from the cab or via remote control device from a nearby trench. The principal mode of fire is indirect fire, direct fire can be performed only within the range determined by traverse and elevation sensors. The original T-813 chassis was replaced with the T-815 chassis with air axle suspension. Two-door variant is also available.

The vehicle can be equipped with a fire control system that transforms the system into a high-end solution for the modern battlefield.

DIGITAL INTERFACE OF THE ELECTRIC SYSTEM

Digital interface of the main weapon systems enables implementation of the Fire Control System with new aiming system according to calculated shooting elements with the possibility of manual control, voice and data communication with the upper levels of command and the new navigation system.

NEW TATRA CHASSIS

Overall designed of whole system increased by unique Tatra chassis T-815-7 with its high cruising speed and high crosscountry capability, good maneuverability and excellent properties.

CREW	1+3	
RANGE	UP TO 40 KM	
CHASSIS	TATRA	
NEW CONTROL BOXES	FITTED WITH THE LATEST ELECTRONIC COMPONENTS	
AREA OF EFFECT	SINGLE ROUND	3,000 M2
	VOLLEY (40 ROCKETS)	DO 30,000 M2 (3 HA)
PARAMETERS		
WEIGHT	25.7 T	
DIMENSIONS	L	9,550 MM
	W	2,550 MM
	H	2,930 MM
UNDERCARRIAGE	T 815-7T3RC1 8X8.1	
ENGINE	TYPE	TATRA T3C-928.90, V8
	OUTPUT	300 KW
MOBILITY	TOP SPEED - ON ROAD	85 KM/HOD
	TOP SPEED - OFF ROAD	30 KM/H
	CRUISING RANGE	700 KM
	FORDING DEPTH (INSTANT)	1.2 M
	GRADIENT	27°
	SIDE SLOPE	18°
	OBSTACLE	0.6 M
	TRENCH CROSSING	2.1 M
SPECIFIC PARAMETERS		
ARMAMENT	MAIN	122 MM JROF ROCKETS /40+40/ MAX. RANGE 20 381 M (GRAD ORIGINAL AT 50°) 40 000 M (G-2000 AT 52.9°) - OPTIONAL
CONVERSION TIME IS MEASURED IN FULLY AUTOMATIC MODE OF AIMING SUPPORTED BY FIRE CONTROL SYSTEM AND NAVIGATION SYSTEM.		
FULLY COMBAT READINESS IN COMBAT POSITION	< 60 S	
FROM COMBAT TO TRAVELLING POSITION	1,5 MIN	
TIME OF FIRING A SALVO	18 S - 22 S	
TIME OF RELOADING 40 ROCKETS	FROM 30 UP TO 36 S	
TIME TO PREPARE 2ND SALVO	1,5 - 2,5 MIN	
LOADING UNIT	THE UNIQUE RM-70 LOADING UNIT ALLOWS FOR AN UNPRECEDENTED RATE OF FIRE - 80 ROCKETS IN 2 MINUTES.	

SHKH VZ.77 DANA



The 152 mm wheeled self-propelled gun howitzer designated „VZ. 77 DANA“ is a wheeled combat vehicle armed with the 152 mm gun. The howitzer has been designed to provide fire support, neutralize enemy firing positions and destroy enemy positions by indirect fire. It is ranked amongst the most traditional and well-proven artillery systems due to the extensive in-service history and production that commenced in the 1970's.

The number of howitzers produced is around 800 and thanks to the compatibility with its successors it is still in service as one of the leading active and effective battle- proven military system.

TATRA CHASSIS

Great negotiation of rough terrain - typical advantage of the unique TATRA concept.

AUTOMATIC RELOADING

Primary reloading system is fully automatic.

GOOD FIREPOWER proven military system.

Very long range, outstanding accuracy and firing rate. Large number of additional carried ammo.

CREW	1+4	
DOSTŘEL	20 KM	
TOP SPEED	80 KM/H	
PARAMETERS		
WEIGHT	29.3 T	
DIMENSIONS	L	11,156 MM
	W	3,000 MM
	H	3,500 MM
ENGINE	TYPE	TATRA 3-930.52, V12
	OUTPUT	265 KW
MOBILITY	TOP SPEED - ON ROAD	80 KM/H
	TOP SPEED - OFF ROAD	25 KM/H
	CRUISING RANGE	600 KM
	FORDING DEPTH (INSTANT)	1.4 M
	GRADIENT	30°
	SIDE SLOPE	15°
	VERTICAL OBSTACLE	0.6 M
	TRENCH CROSSING	1.4 M
SPECIFIC PARAMETERS		
ARMAMENT	MAIN GUN	152.4 MM HOWITZER
	FIRING RANGE	20,000 M (25,500 M WITH DN1CZ AMMUNITION)
	ELEVATION	-4° / 70°
	TRAVERSE	225°
	RATE OF FIRE – 1ST MINUTE	5/MIN
	RATE OF FIRE – SUSTAINED	5/MIN (2/MIN WITH MANUAL LOADING)
	CARRIED AMMUNITION	40-60
	SECONDARY WEAPON	DSHK 1938 12.7 MM HEAVY ANTI-AIRCRAFT MACHINE GUN

The dana has a crew of five with the driver position on the left side in front crew cab with the commander to his right each are equipped with a single hatch on the roof that opens forward. There is two small windows at the front of the vehicle which can be covered by shutters. The other three members of the crew are located in the turret with the gunner and loader on the left and ammunition handler on the right. There is one single door on each side of the turret. The dana is fully protected against firing of small arms and shell splinters.

VERSATILE AUTOLOADER

Dana's unique feature is that its autoloader is able to load a shell and a cartridge in any elevation of the barrel.





TANKS



T-55



The T-55 tank with a long production history is still available for specific mission support. As other earlier generation vehicles in our portfolio it presents a very economical choice for armed forces that need to extend its operability against an enemy with less advanced technological means and weaponry.

Fair crew protection, maneuverability, reliable engine and arms of a standard T-55 tank can be improved with a set of enhancements coming with model T-55 AM2 – e.g. laser sights, infrared rangefinder and KLADIVO fire control system.

ARMAMENT

Main gun, anti aircraft and 2 light machine guns.

T-55 PLATFORM

Excellent technical support availability and spare parts supply.

MOBILITY

Good performance in sloped terrain.

AM2 VERSION UPGRADE

Many upgrades available - including reactive armour, night vision or laser warning.

PARAMETERS		
WEIGHT		38 T
DIMENSIONS	L	9,000 MM
	W	3,270 MM
	H	2,350 MM
ENGINE	TYPE	V-55
	OUTPUT	427 KW
MOBILITY	TOP SPEED - ON ROAD	50 KM/H
	TOP SPEED - OFF ROAD	20 KM/H
	CRUISING RANGE	500 KM
	FORDING DEPTH (INSTANT)	1.4 M
	GRADIENT	32°
	SIDE SLOPE	30°
	OBSTACLE	0.8 M
	TRENCH CROSSING	2.7 M

SPECIFIC PARAMETERS		
ARMAMENT	MAIN	D10-T2SA/SK / 100 MM
	SECONDARY	2× PKT / 7.62 MM
	OPTIONAL	1× DSHKM / 12.7 MM
ENGINE	V-55 AM2 ENGINE - AVAILABLE UPGRADE 12-CYLINDER V 60 DEGREES DIRECT INJECTION MULTIFUEL 4 STROKE WATER COOLED	

T-72 SCARAB



The T-72 M5 SCARAB is EA's modernized version of well known and still widely used T-72 medium battle tank.

SCARAB is designed for contemporary and assymetric conflicts and also missions against enemy equipped with portable anti-tank weapons such as RPGs or TOWs. Its enhanced crew protection, engine output and observation systems offer wider operational capabilities and longer life cycle.

SCARAB presents a great affordable solution both for government procurement and army maintainance agenda with excellent value for money ratio.

We can also offer other modernization aspects per the customer's preference, including i.e. new engine type, new tracks, modern aiming devices, more areas covered with a reactive armour, meteo sensors, new fire-suppression system and more.

BALLISTIC REINFORCEMENT

Crew protection greatly enhanced with minimal negative effects on vehicle mobility.

REACTIVE ARMOUR

Original Czech-made DYNA explosive armour segments.

STRONGER ENGINE

New V-84 engine has 45 kW higher output than original V-46-6 model.

BETTER OPTICS

Upgraded optical and observation systems.

REMOTELY CONTROLLED AA MG

Original manual operated mount replaced with remote control manipulator.

CREW	3	
ARMAMENT	125 / 12.7 / 7.62 MM	
RANGE	5,000 M	
TOP SPEED	60 KM/H	
WEIGHT	43 T	
DIMENSIONS	L	9,530 MM
	W	3,590 MM
	H	2,190 MM
ENGINE	TYPE	V-84
	OUTPUT	618 KW
MOBILITY	TOP SPEED - ON ROAD	60 KM/H
	TOP SPEED - OFF ROAD	45 KM/H
	CRUISING RANGE	500 KM
	FORDING DEPTH (INSTANT)	1.2 M
	GRADIENT	30 °
	SIDE SLOPE	25 °
	OBSTACLE	0.85 M
	TRENCH CROSSING	2.8 M
ARMAMENT	MAIN	2A46 / 125 MM
	SECONDARY	PKT / 7.62 MM
ENGINE	NSVT / 12.7 MM	
	V-84	
	12-CYLINDER	
	V 60 DEGREES	
	DIRECT INJECTION	
	MULTIFUEL	
	4 STROKE	
	WATER COOLED	

T-72



Renowned classic tank with extensive logistic support availability due to its decades long history of production and successful use by over 40 countries.

Apart from the standard armament consisting of a main gun, coaxial anti-infantry machine gun, secondary anti-aircraft gun and smoke dischargers the tank can be fitted with a selection of fire control, passive protection, communication and observation systems.

Its economical availability and logistical advantages make a T-72 a very good choice for internal security and armed conflict mission support.

PROVEN ARMAMENT

Widely used, proven and reliable guns.

STANDARD T-72 PLATFORM

Well available support due to standardization as more than 25 000 units were produced.

MOBILITY

Swift acceleration and good maneuvering in tough terrain.

UPGRADES AVAILABILITY

Many upgrades available - including reactive armour, night vision or laser warning.

CREW		3	
ARMAMENT		125 / 12.7 / 7.62 MM	
RANGE		5,000 M	
MAX SPEED		60 KM/H	
PARAMETERS		T-72	T-72 M1
WEIGHT		41 T	43 T
DIMENSIONS	L	9,530 MM	9,530 MM
	W	3,460 MM	3,590 MM
	H	2,190 MM	2,190 MM
ENGINE	TYPE	V-46	V-46-6
	OUTPUT	573 KW	573 KW
MOBILITY	TOP SPEED - ON ROAD	60 KM/H	60 KM/H
	TOP SPEED - OFF ROAD	45 KM/H	45KM/H
	CRUISING RANGE	460 KM	460 KM
	FORDING DEPTH (INSTANT)	1.2 M	1.2 M
	GRADIENT	30°	30°
	SIDE SLOPE	25°	25°
	OBSTACLE	0.85 M	0.85 M
	TRENCH CROSSING	2.8 M	2.8 M
SPECIFIC PARAMETERS			
ARMAMENT	MAIN	2A46 / 125 MM	39 ROUNDS
	SECONDARY	PKT / 7.62 MM	2,000 ROUNDS
		NSVT / 12.7 MM	300 ROUNDS
ENGINE		V-46	
		12-CYLINDER	
		V 60 DEGREES	
		DIRECT INJECTION	
		MULTIFUEL	
		4 STROKE	
		WATER COOLED	
DECISIVE FIREPOWER	THE 125 MM SMOOTHBORE GUN 2A46 CAN FIRE ARMOUR-PIERCING FIN-STABILISED DISCARDING SABOT (APFSDS), HIGH-EXPLOSIVE ANTI-TANK (HEAT) AND HIGH-EXPLOSIVE FRAGMENTATION (HEF) PROJECTILES.		
CUSTOMIZABLE EQUIPMENT	THE T-72 TANKS ARE AVAILABLE IN SEVERAL VARIANTS.		





ENGINEERING



AM-50 EX



The AM-50 EX bridge layer vehicle is designed to overcome concave terrain obstacles, both dry and wet. This way it provides the necessary maneuverability to military units, featuring a MLC 50 class load-carrying capacity.

Each vehicle is fitted with a single bridge section of 13.5 m length which is installed in a few minutes, allowing another vehicle to append a new one in order to cross a wider obstacle. Up to 8 sections in total can stretch over up to 106 m wide gaps with its supports reaching into up to 6 meters deep trenches.

Thanks to the durable and efficient chassis the vehicle can operate in rough and difficult terrain conditions and allow safe simultaneous crossing for both military vehicles and infantry.

SWIFT DEPLOYMENT

A bridge section can be laid in just a few minutes.

RELIABILITY

Bridge is extremely sturdy and the supports feature unique hydraulic coils.

INTEROPERABILITY

AM-50 EX system can be fitted to previous models with no extra requirements.

HEAVY DUTY

Rigid chassis reduces torsion related superstructure damage.

EARTH MOVING

Optional dozer blade for earth moving.

CREW		3
BRIDGE LENGTH		13.5 - 108 M
NOSNOST		MLC 50 / STANAG 2021
PODVOZEK		TATRA
TOP SPEED		85 KM/H
PARAMETERS		
WEIGHT		26.1 T
DIMENSIONS	L	11,250 MM
	W	3,415 MM
	H	3,830 MM
ENGINE	TYPE	TATRA T3C-928-90
	OUTPUT	300 KW
MOBILITY	TOP SPEED - ON ROAD	85 KM/H
	TOP SPEED - OFF ROAD	40 KM/H
	CRUISING RANGE	500 KM
	FORDING DEPTH (INSTANT)	1.2 M
	GRADIENT	25°
	SIDE SLOPE	20°
	OBSTACLE	0.5 M
	TRENCH CROSSING	2.0 M
	SPECIFIC PARAMETERS	
BRIDGE FIELD	LOAD-CARRYING CAPACITY	MLC 50
	LENGTH	13,500 MM
	WIDTH	4,000 MM
	MAXIMUM GRADIENT	10°
	MAXIMUM CROSSFALL	5°
DETACHABLE TRESTLE	HEIGHT RETRACTED	2,000 MM
	FULLY EXTENDED	6,000 MM
VEHICLES PER ONE SET	4	
	TATRA T 815-7 CHASSIS	
		Modern, heavy-duty design. Ultimate terrain crossing and easy maintenance.

AM-70 EX



The AM-70 EX Bridge Laying Vehicle is a new mobile vehicle-launched bridge designed to provide the necessary maneuverability to military units by fast deployment over dry or water gaps, featuring above all the MLC 70 class high load-carrying capacity. Thanks to the ability to interconnect individual bridge sections, the AM-70 EX offers an insuperable flexibility and a maximum width of spanned gap.

The AM-70 EX is a successor to the well-known successful AM-50 EX and conceptually also to the formerly produced and proven AM-50, and AM-50 B vehicles still in use with many armed forces worldwide. The new scissor type 4-girder light construction of the M-70 EX bridge is also fully compatible with older bridge generations. Equipped with a full bridge deck and curbs the AM-70 EX bridge may also be applied in civil rescue operations or building industry and forestry.

HIGH LOAD CAPACITY

MLC 70 load-carrying capacity according to STANAG 2021 ensures support to heavy or extremely heavy combat vehicles.

FLEXIBILITY – INTERCONNECTABLE BRIDGE SECTIONS

Gradual connection of bridge sections can span a gap up to 106 m wide.

BRIDGE SECTIONS COMPATIBILITY

The new M-70 EX is compatible with former M-50, M-50 EX and M-50 B generations.

MODERN HEAVY DUTY TATRA T 815-7 CHASSIS

Ultimate terrain crossing and easy maintenance.

OPTIONAL CABIN BALLISTIC PROTECTION

The cab can be optionally protected with an armour up to STANAG 4569 LEVEL II.

CREW	3	
CHASSIS	TATRA	
TOP SPEED	90 KM/H	
WEIGHT	33 T	
DIMENSIONS	L (WITH DOZER BLADE)	12,400 MM
	W	3,650 MM
	H	3,900 MM
ENGINE	TYPE	TATRA T3C-928.90
	OUTPUT	300KW AT 1,800 RPM
MOBILITY	TOP SPEED - ON ROAD	90 KM/H
	TOP SPEED - OFF ROAD	40 KM/H
	CRUISING RANGE	500KM
	FORDING DEPTH (WITH PREPARATION)	1.5 M
	GRADIENT	25°
	SIDE SLOPE	20°
	VERTICAL OBSTACLE (WITH BLADE)	420 MM
BRIDGE FIELD	TRENCH CROSSING	2 M
	LOAD-CARRYING CAPACITY	MLC 70
	LENGTH	13,500 MM
	WIDTH	4,300 MM
DETACHABLE TRESTLE	TRAVELLING WIDTH	3,500 MM
	HEIGHT RETRACTED	2,000 MM
	FULLY EXTENDED	6,000 MM
VEHICLES PER ONE SET	4	
	DOZER BLADE OPTION	
	ENABLES THE VEHICLE TO PREPARE THE TERRAIN FOR BRIDGE DEPLOYMENT.	
	POWERFUL HYDRAULIC SYSTEM	
	HIGH-PERFORMANCE WINCH, SIMPLIFIED VEHICLE ELECTRICAL EQUIPMENT USING THE LATEST SWITCHES.	
	VARIABLE CAB	
ENGINE	TWO-DOOR OR FOUR-DOOR, STANDARD OR ARMoured	
	TATRA T3C-928.90	Powerful and reliable eight-cylinder, four-stroke, V-type, with TATRA Diesel engine.

AV-15



Designed to help in both military and civil rescue and recovery purposes the AV-15 is highly mobile system for a range of operations, including recovery and towing of wrecked or damaged cars, clearing and handling collapsed buildings and structures as well as moving various objects and cargo.

AV-15 is easy to use and will provide a great help in post-conflict and post-disaster relief and reconstruction and is also used by firefighting squads for multiple manipulation related tasks.

LONG SERVICE

Extensively used and action proved system.

UNDEMANDING OPERABILITY

Minimal crew requirements

EFFICIENT LOAD CONTROL

360° crane operational range

LIFE-CYCLE ADVANTAGES

Economical procurement, operation and maintenance.

CREW	1 (+1)	
MAX TRAILER WEIGHT	65 TONS	
CHASSIS	TATRA	
MAX SPEED	80 KM/H	
PARAMETERS		
WEIGHT	30.4 T	
DIMENSIONS	L	12,300 MM
	W	2,570 MM
	H	3,360 MM
ENGINE	TYPE	TATRA T3-930-50
	OUTPUT	265 KW
MOBILITY	TOP SPEED - ON ROAD	80 KM/H
	TOP SPEED - OFF ROAD	25 KM/H
	CRUISING RANGE	1,000 KM
	FORDING DEPTH (INSTANT)	1.3 M
	GRADIENT	30°
	SIDE SLOPE	20°
	OBSTACLE	0.36 M
	TRENCH CROSSING	1.6 M
SPECIFIC PARAMETERS		
	CRANE LIFT CAPACITY	15.0 T
	CRANE OUTREACH	7.7 / 11.4 M
	OUTREACH LIFTING CAPACITY	4.0 T
	MAIN WINCH CONSTANT PULL	14.7 / 29.4 / 44.1 T
	MAIN WINCH ROPE LENGTH	150 M
	SECONDARY WINCH CONSTANT PULL	0.6 T
	SECONDARY WINCH ROPE LENGTH	320 M
AVAILABLE EQUIPMENT	CRANE MAIN WINCH + 2 PULLEYS AUXILIARY WINCH WELDING SET WELL PROVEN AND RELIABLE VEHICLE	

THE AV-15 IS A WELL-PROVEN RELIABLE DESIGN FEATURING OPTIONAL MODERNIZED ELEMENTS AND GREAT ECONOMY TO USE.

DECON



The TMVA DECON-17 EX decontamination vehicle is designed to perform the entire decontamination of vehicles, people, armament and gear, incl. oversized equipment, decontamination of terrain, aircrafts, buildings and various objects thanks to the use of high-reach operator platform.

This vehicle is able to operate individually and also by the way of establishing decontamination workplaces for team-linked decontamination. It allows manual and automated decontamination thanks to use of a spraying bar on the platform or decontamination frame. It is a highly mobile vehicle on a modern TATRA military chassis with a 4x4 configuration. Optionally the vehicle can be made in a 6x6 configuration which allows higher tank capacity, even higher performance or reach of the platform. In case of customer preference, the vehicle can also be equipped with an armoured cabin.

EXCELENT MOBILITY

Light 4x4 configuration of the Tatra chassis for easy access to both urban and natural terrain areas.

EFFECTIVITY

High capacity of water and chemical substance mixing chambers, high pressure unit, floating pump for fast tactical operation.

OPERATOR PLATFORM

Allows high reach and multiplies the options to use the vehicle.

WIDE DECONTAMINATION OPTIONS

Decontamination by hand gun, stationary automated or in movement thanks to frontal spray bar - fast decontamination of roads, airports or decontamination areas. Ability to decontaminate people, fight fires and mitigate industrial, ecological or health catastrophies.

PLATFORM VARIABILITY

The option to equip the vehicle with an armoured cabin, another axles or option to customize the superstructure equipment as needed.

CREW	1+2		
MAX.SPEED	115 KM/H		
CHASSIS	TATRA		
TEMPERATURE	0° TO 49°		
PARAMETERS			
WEIGHT	19.0 T		
DIMENSIONS	L	7,560 MM (WITHOUT THE PLATFORM)	
		9,100 MM (WITH THE PLATFORM)	
	W	2,550 MM	
	H	3,150 MM	
	ENGINE	TYPE	TATRA T3C-928.81, V8
		OUTPUT	270 KW
MOBILITY	TOP SPEED - ON ROAD	115 KM/H (WITHOUT LIMITER)	
		90 KM/H (WITH LIMITER)	
	TOP SPEED - OFF ROAD	30 KM/H	
	CRUISING RANGE	1,000 KM	
	FORDING DEPTH (INSTANT / PREPARATION)	1.2 / 1.5 M	
	GRADIENT	40°	
	SIDE SLOPE	17°	
	VERTICAL OBSTACLE	0.5 M	
	TRENCH CROSSING	0.9 M	
SPECIFIC PARAMETERS			
	OVERALL TANK CAPACITY	2,400 L	
	WATER CHAMBER CAPACITY	1 000 L	
	OVERALL CAPACITY	2 × 700 L + 1 X 1 000 L	
	PLATFORM HEIGHT REACH	12 M	
	PLATFORM SIDE REACH	7 M	
	PLATFROM LOAD CAPACITY	200 KG	
	PRESSURE UNIT OPERATION	COLD AT HIGH PRESSURE WARM AT LOW PRESSURE HOT AT HIGH PRESSURE STEAM DECONTAMINATION LIQUID AND POWDERIZED DECONTAMINATION MIXES AUXILLIARY ELECTRICAL SOURCE DECONTAMINATION FRAME CONTINUOUS DECONTAMINATION FRAME FOR SMALL CIVILIAN VEHICLES IS A PART OF DECON SYSTEM EQUIPMENT.	

DECON ER



The DECON vehicle is designed to perform the entire decontamination of vehicles, people, armament and gear, including oversized equipment, decontamination of terrain, aircraft, buildings and various objects thanks to the use of high-reach operator platform. DECON can be configured for service in civilian rescue forces such as special firefighter units and Civilian Defence Forces, enhancing the user capabilities with latest technology of high pressure hot water sanitation. Almost any liquid mixture for treatment of object surfaces is available as the system does not rely on any specific substance.

BOOMLIFT PLATFORM

A platform for 1-2 operators is fitted to a telescopic rotating boom. The platform can be lifted, rotated and tilted. Controls are easy and mounted inside the cage and on the vehicle.

NOZZLE SPRAY BARS

Bars are mounted at the bottom of the moving platform which is lifted above the passing vehicle silhouette. By simple platform positioning its height and angle can be changed on the go to optimize the efficiency of the water curtain through which the vehicles pass.

STATIONARY GATE FRAME

Static gate can be deployed next to the vehicle with nozzles aimed inwards at the passing vehicle. A hardened rubber catch tank gathers contaminated water which is drained into a self-sustained bag for efficient disposal.

PARAMETERS		
WEIGHT		19 T
DIMENSIONS	L	7,560 MM (WITHOUT THE PLATFORM)
		9,100 MM (WITH THE PLATFORM)
	W	2,550 MM
	H	3,150 MM
ENGINE	TYPE	TATRA T3C-928.81, V8
	OUTPUT	270 KW
MOBILITY	TOP SPEED - ON ROAD	115 KM/H (WITHOUT LIMITER)
		90 KM/H (WITH LIMITER)
	TOP SPEED - OFF ROAD	30 KM/H
	CRUISING RANGE	1,000 KM
	FORDING DEPTH (INSTANT / WITH PREPARATION)	1.2 / 1.5 M
	GRADIENT	40°
	SIDE SLOPE	17°
	OBSTACLE	0.5 M
	TRENCH CROSSING	0.9 M
SPECIFIC PARAMETERS		
	OVERALL TANK CAPACITY	2,400 L
	WATER CHAMBER CAPACITY	1 000 L
	OVERALL CAPACITY	2 × 700 L + 1 X 1 000 L
	PLATFORM HEIGHT REACH	12 M
	PLATFORM SIDE REACH	7 M
	PLATFORM LOAD CAPACITY	200 KG
	PRESSURE UNIT OPERATION	COLD AT HIGH PRESSURE WARM AT LOW PRESSURE HOT AT HIGH PRESSURE STEAM DECONTAMINATION LIQUID AND POWDERIZED DECONTAMINATION MIXES AUXILLIARY ELECTRICAL SOURCE DECONTAMINATION FRAME THE DISINFECTION GATE CAN BE INSTALLED ON ANY EVEN GROUND, ONE OR IN SERIES TO SPEED UP THE PROCESS. EACH DECON VEHICLE CARRIERS ONE DECONTAMINATION GATE WITH ACCESSORIES.
GATEWAY	DIMENSIONS	USE
MINIMUM	1X2 M (3.28 X 6.56 FT)	PEDESTRIANS
MAXIMUM	4X4 (13.12 X 13.12 FT)	PERSONAL VEHICLES, VANS TRUCKS, BUSES, DIESEL-DRIVEN RAIL CARS

UDS-214



This universal machine is suited for terrain adjustments, digging, ground and demolition works, debris scattering, cleaning of rivers or ice floe disruption, or improvised lifting of loads. It is very suitable also for civilian rescue operations.

The vehicle can be prolonged by one axle and equipped with an armoured cabin and further hardening for specifically military usage per customer needs - then it is a combat engineering machine ZS-214.

ARMOURED CABIN OPTION

The vehicle can be extended with an additional axle and equipped with an armoured cabin or other upgrades per customer needs.

WIDE SCALE OF ACCESSORIES

The UDS can be used with a basic bucket, but also with special buckets, boulder grapples, breakers, auger, etc.

WORKING RANGE

The unique construction of the telescopic boom allows in the basic design horizontal reach of 14.6 m.

MICROTRAVEL

The possibility of controlling the chassis from the excavator cab increases the work productivity and UDS operability in the workplace.

TURNING HEAD

The possibility of rotating the tool in the full range $n \times 360$ degrees increases the machine variability during excavation works or with additional equipment, e.g. hydraulic hammer, mulcher, nippers etc.

CREW		3
MAX. SPEED		100 KM/H
DIGGING SPEED		115 M ³ /H
TATRA CHASSIS		
PARAMETERS		
WEIGHT		25 T
DIMENSIONS	L	9,450 MM
	W	2,550 MM
	H	3,980 MM
ENGINE	TYPE	DIESEL ENGINE, VARIABLE TYPE
	OUTPUT	230 - 325 KW
MOBILITY	TOP SPEED	100 KM/H
	CRUISING RANGE	500 KM
	FORDING DEPTH (INST.)	1,200 MM
	GRADIENT	31°
SPECIFIC PARAMETERS		
SUPERSTRUCTURE ENGINE	POWER	93 - 104 KW
DIGGING SPEED		115 M ³ /H
LOAD CAPACITY*	TELESCOPE RETRACTED	7,000 KG
	TELESCOPE OUT	2,600 KG
HYDRAULIC SYSTEM		REXROTH
SUPERSTRUCTURE REVOLUTIONS		8 RPM
TOOL REVOLUTIONS		20 RPM
TOOL TILTING RANGE		145° + 2-SIDE TURNING 360°
HORIZONTAL RANGE		
	TELESCOPE RETRACTED	6.3 M
	TELESCOPE OUT	10.5 M
	WITH 4.5 M EXTENSION	14.6 M
DEPTH REACH (ELEVATION 0°, -90° / ELEVATION +30°, -60°)		
	TELESCOPE RETRACTED	2.9 M / 2.1 M
	TELESCOPE OUT	7 M / 5.7 M
	WITH 4.5 M EXTENSION	11.2 M / 9.2 M
* load capacity at tilt point of the rapid fastener (without extension attachments)		

TREVA-15



TREVA-15 (Tactical Recovery and Evacuation Vehicle) is a new recovery vehicle based on the well-known and proven AV-15 recovery vehicle. The new vehicle uses the TATRA FORCE T 815-7 8x8 chassis with an extended 4-door cabin designed for the transportation of the retrieved vehicle crew.

The superstructure of the vehicle is largely derived from the well-proven AV-15 and retains the simplicity of servicing and operational robustness. This new design resulted in an increase in the retrieval capabilities for the evacuation of vehicles, armoured personnel carriers and other semi-hung vehicles up to 20 t. To ensure this, hanging, tracking and binding devices were developed and adapted for, among others, the recovery of PANDUR II wheeled armoured personnel carriers.

This new vehicle is equipped with an electrical generator unit with a welding set and connections for electric power tools, which are also included in the vehicle's basic load. The vehicle is also equipped with a safety overload switch and protection against contact with high-voltage, power lines.

EVACUATION CAPACITY

The TREVA-15 vehicle has higher capacity for evacuation of semi-hung vehicles and enables transportation of 4 members of the evacuated vehicle's crew.

A WELL-PROVEN SOLUTION

Extensively used and well-proven system thanks to the direct link to the original AV-15.

THE ECONOMICS OF OPERATION

Minimum requirements for service, high serviceability and non-demanding maintenance.

HIGH CROSSABILITY IN HARD TERRAIN

Unmatched solution of the TATRA 8x8 military series chassis.

VARIABILITY

A possibility to adapt the vehicle to the engineering means used by a customer, a possibility to select equipment and additional accessories, an armour cabin or an automated gear-box.

CREW	2 (+4)	
MAXIMUM SPEED	90 KM/H	
	TATRA CHASSIS	
RECOVERY FORCE	440 KN	
EVACUATION CAPACITY - HUNG VEHICLE	20 T	
EVACUATION CAPACITY - TOWED VEHICLE	40 T	
TOWER TRAILER	65 T	
CRANE CAPACITY	15 T	
PARAMETERS		
DEAD WEIGHT	31,5 T	
DIMENSIONS	L	11,600 MM
	W	2,550 MM
	H	3,380 MM
ENGINE	TYPE	TATRA T3C-928.90
	POWER	300 KW AT 1,800 RPM
MOBILITY	MAXIMUM SPEED - ROAD	80 KM/H
	MAXIMUM SPEED - TERRAIN	25 KM/H
	RANGE WITH THE BASIC FUEL TANK	800 KM
	FORDING DEPTH (WITHOUT / WITH PREPARATION)	1.2 M / 1.5 M
	GRADIENT	30°
	SIDE SLOPE	30°
	VERTICAL OBSTACLE ABILITY	0.4 M
	TRENCH CROSSING ABILITY	2 M
SPECIFIC PARAMETERS		
	CRANE CAPACITY	15 T
	MAXIMUM CRANE OUTREACH	7,7 M BASIC / 11,4 M WITH THE EXTENSION
	CRANE CAPACITY WITH THE EXTENSION	4 T
	WINCH - TRACTION FORCE	14.7 / 29.4 / 44.1 T DEPENDING ON A NUMBER OF PULLEYS*
	ROPE LENGTH	150 M
	AUXILIARY WINCH	0.6 T
	ROPE LENGTH	320 M
	EVACUATION CAPACITY	UP TO 20 T (SEMI-HUNG EVACUATED VEHICLE)
		UP TO 40 T (VEHICLE EVACUATED ON A TOWING BAR)
	TOWED VEHICLE WEIGHT	65 T
	*29.4 T WITH ONE PULLEY AND 44.1 T WITH TWO PULLEYS	
STANDARD EQUIPMENT	MAIN AND AUXILIARY WINCH CRANE DOZER BLADE ELECTRICAL GENERATOR WELDING SET WORKSHOP WORKPLACE	

POSEIDON



POSEIDON PS4W containerised water treatment unit is a highly effective mobile solution for armed forces and life-support system providing potable water supplies based on the very simple automated production from raw surface or subterranean water.

At the place of use connect to the raw water source, the treated water distribution system, the waste water drain and to the electric power unit - it may be integrated into the water treatment unit directly.

The water treatment unit is a two-level system, optionally enabling more levels. After filtration, the treated water is disinfected and purified /harmless/.

MOBILITY

Standardized containerized installation provides for fast use as needed by the user - immediate easy transportation available.

HIGH PERFORMANCE

Featuring the unique special developed clarifier, the water treatment unit presents high production capacity of up to 12 m³/h per 20" ISO container.

FULLY AUTOMATIC OPERATION

The only manual operation is refilling chemicals for water treatment.

VARIABLE DESIGN

Modular water treatment unit design enables optimization of a suitable solution based on the requested level of performance and on the input raw water level of pollution, from light to oil water pollution.

COST-EFFECTIVENES

This compact solution bears minimum operating and manipulation costs and at the same time reducing the logistic support costs.

CAPACITY	UP TO 12 M3/H	
STANDARD ISO CONTAINER		
AUTOMATIC OPERATION		
NEW PRODUCT		
PARAMETERS		
DISPOSITION	20" ISO CONTAINER, ALTERNATIVE 40" ISO CONTAINER	
DIMENSIONS	L	6 058 MM
	W	2 438 MM
	H	2 438 MM
CAPACITY	OPTIONAL, UP TO 12 M3/H POTABLE WATER PER 20" CONTAINER	
FUNCTION	BASIC IS THE 2-LEVEL WATER TREATMENT UNIT, OTHER LEVELS OPTIONAL	
LEVEL 1	PRE-FILTERS + SPECIAL DEVELOPED CLARIFIER	
LEVEL 2	CLOSED SAND FILTER	
WASTE WATER	6-8 % OF CAPACITY	
WASTE WATER QUALITY*	PH	6-7.5
	HCO ₃	1-3 MMOL/L
	CHSKMN	< 20 MG/L
	COLOUR	20-200 MG/L PT
	SUSPENDED MATTER	< 2 000 MG/L
* BASIC TREATMENT MECHANISM		

APPLICATION

WATER TREATMENT CONTAINER UNIT HAS BEEN DESIGNED FOR:
 PROVIDING POTABLE WATER SUPPLIES TO ARMED FORCES
 RESCUE OPERATIONS IN CASE OF NATURAL DISASTERS
 STATIONARY USE, E.G. TO PROVIDE WATER SUPPLIES TO THE POPULATION, WATER PRODUCTION FOR SWIMMING POOLS, INDUSTRY, POWER-PLANT ENGINEERING, AGRICULTURE AND OTHER
 PRIOR TO THE WATER TREATMENT UNIT USE A TECHNO-CHEMICAL ANALYSIS OF THE INPUT WATER NEED TO BE PERFORMED.

ENGINES

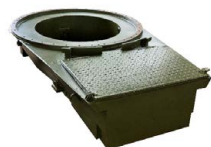


Name	UTD-20 S1	UTD-20	UTD-29	V6M	V-55 AM2	TE 2T 1050
Description	6-cylinder	6-cylinder	10-cylinder	6-cylinder	12-cylinder	12-cylinder
	V 120 degrees	V 120 degrees	V 150 degrees		V 60 degrees	V 60 degrees
	direct injection	Direct injection	Direct injection	Direct injection	Direct injection	Direct fuel injection
	4 stroke	4 Stroke	4 Stroke	4 Stroke	4 Stroke	4 Stroke
	water cooled	Water cooled	Water cooled	Water cooled	Water cooled	Water cooled
Output	220 kW	220 kW	338 kW	206 Kw	456 kW	783 kW
Used in	BMP-1, BMP-2 and their versions	BMP-1	BMP-3	GM	T-55 AM2	kit available for MBT up-grades
Max. fuel consumption	238 g/kWh at 2,600 rpm	238 g/kWh at 2,600 rpm/min	251 k/kWh at 2,600 rpm/min	249 g/kWh at 2,000 rpm/min	247,5 k/kWh at 2,000 rpm/min	228 g/kWh at 2,000 rpm/min
Max. oil consumption	8.2 g/kWh at 2,000 rpm	8,2 g/kWh at 2,200 rpm/min	6,8 g/kWh at 2,200rpm/min	8 g/kWh at 1,800 rpm/min	8 g/kWh at 1,800 rpm/min	6 g/kWh at 1,800 rpm/min
Max. torque (Nm)	1,030 Nm	1,030 Nm	1,461Nm	1,176 Nm	2,404 Nm	4,600 Nm
The oil pressure in the main pipe	0.7-1 MPa	0,7-1 MPa	0,8-1,2 MPa	0,7-1 MPa	0,7-1 MPa	0,7-1 MPa
Fuel	Diesel	Diesel	Diesel	Diesel	Diesel	Diesel
Weight of the engine	665 kg	665 kg	850 Kg	825 Kg	910 kg	1,060 kg
Engine dimensions	L	834 mm	834 mm	997 mm	1,402 mm	1,615 mm
	W	1,150 mm	1,150 mm	1,228 mm	873 mm	1,010 mm
	H	757 mm	757 mm	598 mm	997 mm	949 mm
	BFP					
	Modified for efficient cold weather start.					



V-46.6	V-55A	V-6-P1	KAMAZ - 7401	JAMZ-23N	V-6M-K37	V-84	T3C-930-50-600K
12-cylinder	12-cylinder	6-cylinder	8-cylinder	8-cylinder	10-cylinders	12-cylinder	12-cylinder
V 60 degrees	V 60 degrees		V 90 degrees	V 60 degrees	V 144 degrees	V 60 degrees	V 60 degrees
Direct injection	Direct injection	direct injection	direct injection	direct injection	direct injection	Direct injection	direct injections
4 Stroke	4 Stroke	4 stroke	4 stroke	4 stroke	4 stroke	4 Stroke	4 stroke
Water cooled	Water cooled	water cooled	water cooled	water cooled	water cooled	Water cooled	air cooled
573,7 kW	426 kW	191 kW	210 kW	220 kW	260 kW	624 kW	430 kW
T-72	T-55	ZSU-23-4 SHILKA	Kamaz	2 S-1	GM 578	T-72 B (M)	Multifunctional engine for military and non-military vehicles
245 g/kWh at 2,000 rpm/min	247,5 k/kWh at 2,000 rpm/min	245 g/kWh at 1,800 rpm	242 g/kWh at 2,600 rpm	285 g/kWh at 2,100 rpm	238 g/kWh at 2,000 rpm	259,9 g/kWh at 2,000 rpm	265.2 g(kWh at 1,800 rpm
9,52 g/kWh at 1,800 rpm/min	8 g/kWh at 1,800 rpm/min	8g/kWh at 1,800 rpm			6.8 g/kWh at 1.600 rpm	8 g/kWh at 1,800 rpm	
3,098 Nm	2,226 Nm	1,060 Nm	650 Nm	1,080 Nm	1,470 Nm	3,483 Nm	2,800 Nm
0,7-1 MPa	0,7-1 MPa	0.7-1 MPa	0.2-0.6 MPa	0.4-0.7 Mpa	0.7-1 Mpa	0,7-1 Mpa	0.1-0.4 Mpa
Diesel	Diesel	Diesel	diesel	Diesel	diesel	Diesel	diesel
980 kg	910 kg	825 kg	795 kg	1,560 kg	875 kg	980 Kg	980 kg
1,480 mm	1,580 mm	1,402 mm	1,150 mm	1,338 mm	1,755 mm	1,480 mm	2,040 mm
896 mm	905 mm	873 mm	785 mm	1,045 mm	873 mm	896 mm	1,002 mm
902 mm	920 mm	997 mm	1,400 mm	1,100 mm	997 mm	902 mm	1,225 mm

BM-21 PARTS



Frame assembly

Sb.02



Base assembly

Sb.03



Turret Ring

Sb.08



Carrycot Assembly

Sb.04



Parts of electric drive

Sb.06



Launcher assembly

Sb.09



Electric wiring

Sb.012



Locking mechanism

00-260



Lift Reducer

Sb.0904



Swing Reducer

Sb.0905



Power take-off

Sb.0906



Generator installation

Sb.0903



Remote control

Sb.0901



Appliance

Sb.00/9V370M



Manual drive

Sb.00-7



Backlight Kit

MODERNIZATION PARTS



Control Box

Sb.0902



Mechanical Sight

Sb.00-19



Locking mechanism rotary part

Sb.03-2



deactivation of springs

Sb.07



Automated control unit for firing chains

The unit functionally replaces two standard separate devices in operation: a pulse unit and a current distributor



Electronic control unit motor driven

Replaces the EMU-12PM electric machine amplifier



automated transfer to the stowed position

Provides automatic transfer of the guide tube package to the stowed position.



On-board computer

Provides:
- determination of the coordinates of the combat vehicle;
- preparation of data for shooting;
- guidance of a combat vehicle;
- reception and transmission of data via digital means of communication.





PA-KO

Witaszyczki 66
63-230 Witaszyce
POLAND

biuro@pa-ko.com.pl
+48 601 753 035
+48 796 725 607